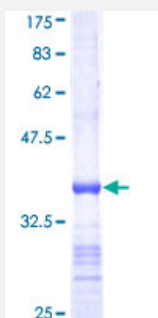


# UBE2E3 (Human) Recombinant Protein (Q01)

Catalog # H00010477-Q01

Size 25 ug, 10 ug

## Applications



## Specification

Product Description	Human UBE2E3 partial ORF ( NP_006348, 65 a.a. - 152 a.a.) recombinant protein with GST-tag at N-terminal.
Sequence	RIQKELAEITLDPPPNC SAGPKGDNIYWRSTILGPPGSVYEGGVFFLDITFSSDYPFKPPKVTFRT RIYHCNINSQGVICLDILKDN
Host	Wheat Germ (in vitro)
Theoretical MW (kDa)	35.42
Interspecies Antigen Sequence	Mouse (100); Rat (100)
Preparation Method	<a href="#">in vitro wheat germ expression system</a>
Purification	Glutathione Sepharose 4 Fast Flow
Quality Control Testing	12.5% SDS-PAGE Stained with Coomassie Blue.
Storage Buffer	50 mM Tris-HCl, 10 mM reduced Glutathione, pH=8.0 in the elution buffer.
Storage Instruction	Store at -80°C. Aliquot to avoid repeated freezing and thawing.
Note	Best use within three months from the date of receipt of this protein.

## Applications

- Enzyme-linked Immunoabsorbent Assay
- Western Blot (Recombinant protein)
- Antibody Production
- Protein Array

## Gene Info — UBE2E3

Entrez GeneID [10477](#)

GeneBank Accession# [NM\\_006357](#)

Protein Accession# [NP\\_006348](#)

Gene Name UBE2E3

Gene Alias UBCH9, UbcM2

Gene Description ubiquitin-conjugating enzyme E2E 3 (UBC4/5 homolog, yeast)

Omim ID [604151](#)

Gene Ontology [Hyperlink](#)

**Gene Summary** The modification of proteins with ubiquitin is an important cellular mechanism for targeting abnormal or short-lived proteins for degradation. Ubiquitination involves at least three classes of enzymes: ubiquitin-activating enzymes, or E1s, ubiquitin-conjugating enzymes, or E2s, and ubiquitin-protein ligases, or E3s. This gene encodes a member of the E2 ubiquitin-conjugating enzyme family. The encoded protein shares 100% sequence identity with the mouse and rat counterparts, which indicates that this enzyme is highly conserved in eukaryotes. Two alternatively spliced transcript variants encoding the same protein have been found for this gene. [provided by RefSeq]

**Other Designations** ubiquitin carrier protein|ubiquitin-conjugating enzyme E2E 3|ubiquitin-conjugating enzyme E2E 3 (homologous to yeast UBC4/5)|ubiquitin-protein ligase

## Pathway

- [Ubiquitin mediated proteolysis](#)

## Disease

- [Tobacco Use Disorder](#)