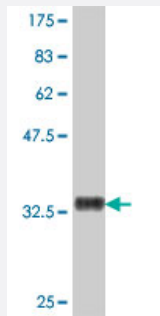


# UBE2E3 polyclonal antibody (A01)

Catalog # H00010477-A01

Size 50 uL

## Applications



Western Blot detection against Immunogen (35.79 KDa) .

## Specification

<b>Product Description</b>	Mouse polyclonal antibody raised against a partial recombinant UBE2E3.
<b>Immunogen</b>	UBE2E3 (NP_006348, 65 a.a. ~ 152 a.a) partial recombinant protein with GST tag.
<b>Sequence</b>	RIQKELAEITLDPPPNC SAGPKGDNIYWRSTILGPPGSVYEGGVFFLDITFSSDYPFKPPKVTFRTR RIYHCNINSQGVICLDILKDN
<b>Host</b>	Mouse
<b>Reactivity</b>	Human
<b>Interspecies Antigen Sequence</b>	Mouse (100); Rat (100)
<b>Quality Control Testing</b>	Antibody Reactive Against Recombinant Protein. Western Blot detection against Immunogen (35.79 KDa) .
<b>Storage Buffer</b>	50 % glycerol
<b>Storage Instruction</b>	Store at -20°C or lower. Aliquot to avoid repeated freezing and thawing.

## Applications

- Western Blot (Recombinant protein)

[Protocol Download](#)

- ELISA

## Gene Info — UBE2E3

Entrez GeneID [10477](#)

GeneBank Accession# [NM\\_006357](#)

Protein Accession# [NP\\_006348](#)

Gene Name UBE2E3

Gene Alias UBCH9, UbcM2

Gene Description ubiquitin-conjugating enzyme E2E 3 (UBC4/5 homolog, yeast)

Omim ID [604151](#)

Gene Ontology [Hyperlink](#)

**Gene Summary**

The modification of proteins with ubiquitin is an important cellular mechanism for targeting abnormal or short-lived proteins for degradation. Ubiquitination involves at least three classes of enzymes: ubiquitin-activating enzymes, or E1s, ubiquitin-conjugating enzymes, or E2s, and ubiquitin-protein ligases, or E3s. This gene encodes a member of the E2 ubiquitin-conjugating enzyme family. The encoded protein shares 100% sequence identity with the mouse and rat counterparts, which indicates that this enzyme is highly conserved in eukaryotes. Two alternatively spliced transcript variants encoding the same protein have been found for this gene. [provided by RefSeq]

**Other Designations**

ubiquitin carrier protein|ubiquitin-conjugating enzyme E2E 3|ubiquitin-conjugating enzyme E2E 3 (homologous to yeast UBC4/5)|ubiquitin-protein ligase

## Pathway

- [Ubiquitin mediated proteolysis](#)

## Disease

- [Tobacco Use Disorder](#)