

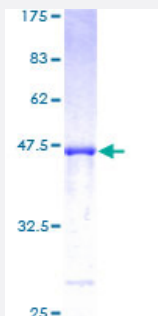
Full-Length

## PPIH (Human) Recombinant Protein (P01)

Catalog # H00010465-P01

Size 25 ug, 10 ug

### Applications



### Specification

Product Description	Human PPIH full-length ORF ( AAH03412, 1 a.a. - 177 a.a.) recombinant protein with GST-tag at N-terminal.
Sequence	MAVANSSPVNPVVFFDVSIGGQEVGRMKIELFADVVPKTAENFRQFCTGEFRKDGVPIGYKGSTF HRVIKDFMIQGGDFVNGDGTGVASIYRGPFADENFKLRHSAPGLLSMANS GPSTNGCQFFITCSK CDWLDGKHVVFGKIIDGLLVMRKIENVPTGPNNKPKLPVVISQCGEM
Host	Wheat Germ (in vitro)
Theoretical MW (kDa)	45.21
Interspecies Antigen Sequence	Rat (99)
Preparation Method	<a href="#">in vitro wheat germ expression system</a>
Purification	Glutathione Sepharose 4 Fast Flow
Quality Control Testing	12.5% SDS-PAGE Stained with Coomassie Blue.
Storage Buffer	50 mM Tris-HCl, 10 mM reduced Glutathione, pH=8.0 in the elution buffer.
Storage Instruction	Store at -80°C. Aliquot to avoid repeated freezing and thawing.

## Note

Best use within three months from the date of receipt of this protein.

## Applications

- Enzyme-linked Immunoabsorbent Assay
- Western Blot (Recombinant protein)
- Antibody Production
- Protein Array

## Gene Info — PPIH

Entrez GeneID [10465](#)

GeneBank Accession# [BC003412](#)

Protein Accession# [AAH03412](#)

Gene Name PPIH

Gene Alias CYP-20, CYPH, MGC5016, SnuCyp-20, USA-CYP

Gene Description peptidylprolyl isomerase H (cyclophilin H)

Omim ID [606095](#)

Gene Ontology [Hyperlink](#)

**Gene Summary** The protein encoded by this gene is a member of the peptidyl-prolyl cis-trans isomerase (PPIase) family. PPIases catalyze the cis-trans isomerization of proline imidic peptide bonds in oligopeptides and accelerate the folding of proteins. This protein is a specific component of the complex that includes pre-mRNA processing factors PRPF3, PRPF4, and PRPF18, as well as U4/U5/U6 tri-snRNP. This protein has been shown to possess PPIase activity and may act as a protein chaperone that mediates the interactions between different proteins inside the spliceosome. [provided by RefSeq]

**Other Designations** OTTHUMP00000008725|PPIase h|U-snRNP-associated cyclophilin SunCyp-20|USA-CyP SnuCyp-20|cyclophilin H|peptidyl-prolyl cis-trans isomerase H|peptidylprolyl isomerase H|rotamase H|small nuclear ribonucleoprotein particle-specific cyclophilin H