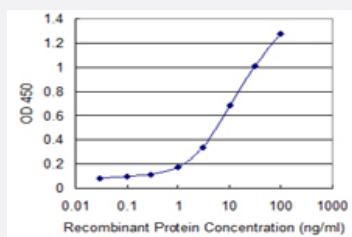


CLEC10A monoclonal antibody (M02), clone 1E11

Catalog # H00010462-M02

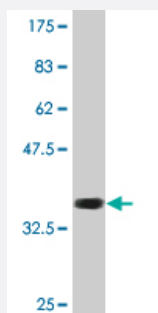
Size 100 ug

Applications



Sandwich ELISA (Recombinant protein)

Detection limit for recombinant GST tagged CLEC10A is 0.3 ng/ml as a capture antibody.



Western Blot detection against Immunogen (36.74 KDa) .

Specification

Product Description

Mouse monoclonal antibody raised against a partial recombinant CLEC10A.

Immunogen

CLEC10A (NP_006335.2, 70 a.a. ~ 169 a.a) partial recombinant protein with GST tag. MW of the GST tag alone is 26 KDa.

Sequence

VTLRTDFSNFTSNTVAEIQALTSQGSSLEETIASLKAIEVEGFKQERQAVHSEMLLRVQQLVQDLKK
LTCQVATLNNNGEEASTEGTCCPVNWVEHQDSCY

Host

Mouse

Reactivity

Human

Interspecies Antigen Sequence	Mouse (51); Rat (55)
Isotype	IgG2a Kappa
Quality Control Testing	Antibody Reactive Against Recombinant Protein. Western Blot detection against Immunogen (36.74 KDa) .
Storage Buffer	In 1x PBS, pH 7.4
Storage Instruction	Store at -20°C or lower. Aliquot to avoid repeated freezing and thawing.

Applications

- Western Blot (Recombinant protein)

[Protocol Download](#)

- Sandwich ELISA (Recombinant protein)

Detection limit for recombinant GST tagged CLEC10A is 0.3 ng/ml as a capture antibody.

[Protocol Download](#)

- ELISA

Gene Info — CLEC10A

Entrez GeneID	10462
GeneBank Accession#	NM_006344
Protein Accession#	NP_006335.2
Gene Name	CLEC10A
Gene Alias	CD301, CLECSF13, CLECSF14, HML, HML2
Gene Description	C-type lectin domain family 10, member A
Omim ID	605999
Gene Ontology	Hyperlink

Gene Summary

This gene encodes a member of the C-type lectin/C-type lectin-like domain (CTL/CTLD) superfamily. Members of this family share a common protein fold and have diverse functions, such as cell adhesion, cell-cell signalling, glycoprotein turnover, and roles in inflammation and immune response. The encoded type 2 transmembrane protein may function as a cell surface antigen. Two transcript variants encoding distinct isoforms have been identified for this gene. [provided by RefSeq]

Other Designations

C-type (calcium dependent, carbohydrate-recognition domain) lectin, superfamily member 13 (macrophage-derived)|C-type (calcium dependent, carbohydrate-recognition domain) lectin, superfamily member 14 (macrophage-derived)|C-type lectin, superfamily member

Disease

- [Polyradiculoneuropathy](#)