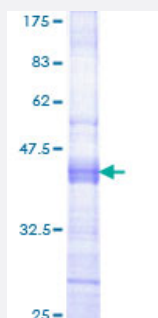


# GPNMB (Human) Recombinant Protein (Q01)

Catalog # H00010457-Q01

Size 25 ug, 10 ug

## Applications



## Specification

<b>Product Description</b>	Human GPNMB partial ORF ( NP_001005340, 104 a.a. - 203 a.a.) recombinant protein with GST-tag at N-terminal.
<b>Sequence</b>	RCQKEDANGNIVYEKNCRNEAGLSADPYVYNWTAWSESDGNGTGQSHHNVFPDGKPFPHH PGWRRWNFIYVFHTLGQYFQKLGRCSVRVSVNTANVTL
<b>Host</b>	Wheat Germ (in vitro)
<b>Theoretical MW (kDa)</b>	36.74
<b>Interspecies Antigen Sequence</b>	Mouse (70); Rat (69)
<b>Preparation Method</b>	<a href="#">in vitro wheat germ expression system</a>
<b>Purification</b>	Glutathione Sepharose 4 Fast Flow
<b>Quality Control Testing</b>	12.5% SDS-PAGE Stained with Coomassie Blue.
<b>Storage Buffer</b>	50 mM Tris-HCl, 10 mM reduced Glutathione, pH=8.0 in the elution buffer.
<b>Storage Instruction</b>	Store at -80°C. Aliquot to avoid repeated freezing and thawing.
<b>Note</b>	Best use within three months from the date of receipt of this protein.

## Applications

- Enzyme-linked Immunoabsorbent Assay
- Western Blot (Recombinant protein)
- Antibody Production
- Protein Array

## Gene Info — GPNMB

Entrez GeneID [10457](#)

GeneBank Accession# [NM\\_001005340](#)

Protein Accession# [NP\\_001005340](#)

Gene Name GPNMB

Gene Alias HGFIN, NMB

Gene Description glycoprotein (transmembrane) nmb

Omim ID [604368](#)

Gene Ontology [Hyperlink](#)

**Gene Summary** The protein encoded by this gene is a type I transmembrane glycoprotein which shows homology to the pMEL17 precursor, a melanocyte-specific protein. GPNMB shows expression in the lowly metastatic human melanoma cell lines and xenografts but does not show expression in the highly metastatic cell lines. GPNMB may be involved in growth delay and reduction of metastatic potential. Two transcript variants encoding different isoforms have been found for this gene. [provided by RefSeq]

**Other Designations** glycoprotein NMB|glycoprotein nmb-like protein|osteoactivin|transmembrane glycoprotein

## Disease

- [Tobacco Use Disorder](#)