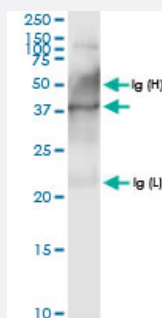


PECI (Human) IP-WB Antibody Pair

Catalog # H00010455-PW1

Size 1 Set

Applications



Immunoprecipitation of PECI transfected lysate using rabbit polyclonal anti-PECI and Protein A Magnetic Bead ([U0007](#)), and immunoblotted with rabbit polyclonal anti-PECI.

Specification

Product Description	This IP-WB antibody pair set comes with one antibody for immunoprecipitation and another to detect the precipitated protein in western blot.
Reactivity	Human
Interspecies Antigen Sequence	Mouse (75); Rat (75)
Quality Control Testing	Immunoprecipitation-Western Blot (IP-WB) Immunoprecipitation of PECI transfected lysate using rabbit polyclonal anti-PECI and Protein A Magnetic Bead (U0007), and immunoblotted with rabbit polyclonal anti-PECI.
Supplied Product	Antibody pair set content: 1. Antibody pair for IP: rabbit polyclonal anti-PECI (300 ul) 2. Antibody pair for WB: rabbit polyclonal anti-PECI (50 ul)
Storage Instruction	Store reagents of the antibody pair set at -20°C or lower. Please aliquot to avoid repeated freeze thaw cycle. Reagents should be returned to -20°C storage immediately after use.

Applications

- Immunoprecipitation-Western Blot

[Protocol Download](#)

Gene Info — Peci

Entrez GeneID [10455](#)

Gene Name Peci

Gene Alias ACBD2, DRS1, HCA88, KIAA0536, dJ1013A10.3

Gene Description peroxisomal D3,D2-enoyl-CoA isomerase

Omim ID [608024](#)

Gene Ontology [Hyperlink](#)

Gene Summary Peci is an auxiliary enzyme that catalyzes an isomerization step required for the beta-oxidation of unsaturated fatty acids.[supplied by OMIM]

Other Designations acyl-Coenzyme A binding domain containing 2|hepatocellular carcinoma-associated antigen 88

Pathway

- [Fatty acid metabolism](#)