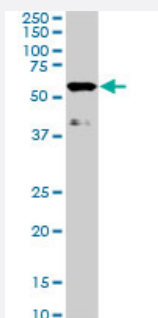


# MAP3K7IP1 monoclonal antibody (M03), clone 2A12

Catalog # H00010454-M03

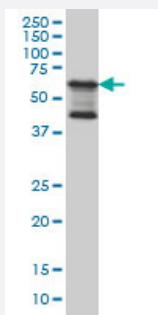
Size 100 ug

## Applications



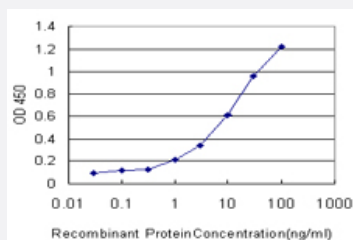
### Western Blot (Cell lysate)

MAP3K7IP1 monoclonal antibody (M03), clone 2A12. Western Blot analysis of MAP3K7IP1 expression in PC-12 ( Cat # L012V1 ).



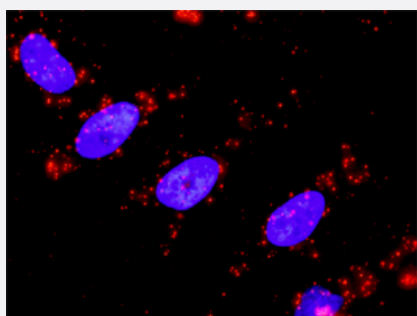
### Western Blot (Cell lysate)

MAP3K7IP1 monoclonal antibody (M03), clone 2A12 Western Blot analysis of MAP3K7IP1 expression in HeLa ( Cat # L013V1 ).



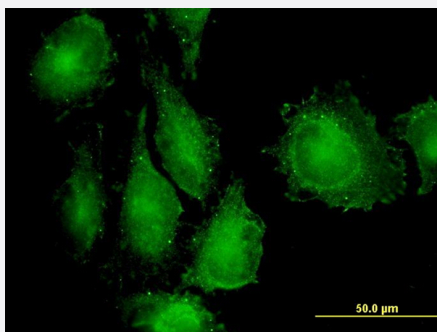
### Sandwich ELISA (Recombinant protein)

Detection limit for recombinant GST tagged MAP3K7IP1 is approximately 0.3ng/ml as a capture antibody.



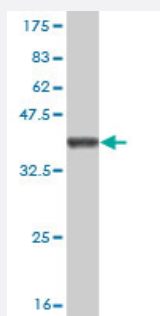
### In situ Proximity Ligation Assay (Cell)

Proximity Ligation Analysis of protein-protein interactions between HSPA1L and MAP3K7IP1. HeLa cells were stained with anti-HSPA1L rabbit purified polyclonal 1:1200 and anti-MAP3K7IP1 mouse monoclonal antibody 1:50. Each red dot represents the detection of protein-protein interaction complex, and nuclei were counterstained with DAPI (blue).



## Immunofluorescence

Immunofluorescence of monoclonal antibody to MAP3K7IP1 on HeLa cell.  
[antibody concentration 10 ug/ml]



Western Blot detection against Immunogen (36.52 KDa) .

## Specification

<b>Product Description</b>	Mouse monoclonal antibody raised against a partial recombinant MAP3K7IP1.
<b>Immunogen</b>	MAP3K7IP1 (NP_705717.1, 3 a.a. ~ 100 a.a) partial recombinant protein with GST tag. MW of the GST tag alone is 26 KDa.
<b>Sequence</b>	AQRRSLLQSEQQPSWTDDLPLCHLSGVGSASNRSYSADGKGTESHPEDSWLKFRSENNCFLYGVFNGYDGNRVTNFVAQRLSAELLLGQLNAEHAEA
<b>Host</b>	Mouse
<b>Reactivity</b>	Human, Rat
<b>Isotype</b>	IgG1 Kappa
<b>Quality Control Testing</b>	Antibody Reactive Against Recombinant Protein. Western Blot detection against Immunogen (36.52 KDa) .
<b>Storage Buffer</b>	In 1x PBS, pH 7.4
<b>Storage Instruction</b>	Store at -20°C or lower. Aliquot to avoid repeated freezing and thawing.

## Applications

- Western Blot (Cell lysate)

MAP3K7IP1 monoclonal antibody (M03), clone 2A12. Western Blot analysis of MAP3K7IP1 expression in PC-12 ( Cat # L012V1 ).

[Protocol Download](#)

- Western Blot (Cell lysate)

MAP3K7IP1 monoclonal antibody (M03), clone 2A12 Western Blot analysis of MAP3K7IP1 expression in HeLa ( Cat # L013V1 ).

[Protocol Download](#)

- Western Blot (Recombinant protein)

[Protocol Download](#)

- Sandwich ELISA (Recombinant protein)

Detection limit for recombinant GST tagged MAP3K7IP1 is approximately 0.3ng/ml as a capture antibody.

[Protocol Download](#)

- ELISA

- *In situ* Proximity Ligation Assay (Cell)

Proximity Ligation Analysis of protein-protein interactions between HSPA1L and MAP3K7IP1. HeLa cells were stained with anti-HSPA1L rabbit purified polyclonal 1:1200 and anti-MAP3K7IP1 mouse monoclonal antibody 1:50. Each red dot represents the detection of protein-protein interaction complex, and nuclei were counterstained with DAPI (blue).

- Immunofluorescence

Immunofluorescence of monoclonal antibody to MAP3K7IP1 on HeLa cell. [antibody concentration 10 ug/ml]

## Gene Info — MAP3K7IP1

Entrez GeneID	<a href="#">10454</a>
---------------	-----------------------

GeneBank Accession#	<a href="#">NM_153497</a>
---------------------	---------------------------

Protein Accession#	<a href="#">NP_705717.1</a>
--------------------	-----------------------------

Gene Name	MAP3K7IP1
-----------	-----------

Gene Alias	3'-Tab1, MGC57664, TAB1
------------	-------------------------

Gene Description	mitogen-activated protein kinase kinase kinase 7 interacting protein 1
------------------	--

Omim ID [602615](#)

Gene Ontology [Hyperlink](#)

**Gene Summary**

The protein encoded by this gene was identified as a regulator of the MAP kinase kinase kinase MAP3K7/TAK1, which is known to mediate various intracellular signaling pathways, such as those induced by TGF beta, interleukin 1, and WNT-1. This protein interacts and thus activates TAK1 kinase. It has been shown that the C-terminal portion of this protein is sufficient for binding and activation of TAK1, while a portion of the N-terminus acts as a dominant-negative inhibitor of TGF beta, suggesting that this protein may function as a mediator between TGF beta receptors and TAK1. This protein can also interact with and activate the mitogen-activated protein kinase 14 (MAPK14/p38alpha), and thus represents an alternative activation pathway, in addition to the MAPKK pathways, which contributes to the biological responses of MAPK14 to various stimuli. Alternatively spliced transcript variants encoding distinct isoforms have been reported. [provided by RefSeq]

**Other Designations** TAK1-binding protein 1|transforming growth factor beta-activated kinase-binding protein 1

## Pathway

- [MAPK signaling pathway](#)
- [Toll-like receptor signaling pathway](#)

## Disease

- [Arthritis](#)
- [Crohn Disease](#)