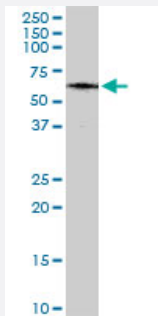


# MAP3K7IP1 monoclonal antibody (M01), clone 2G9

Catalog # H00010454-M01

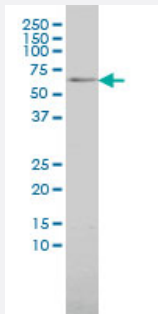
Size 50 ug

## Applications



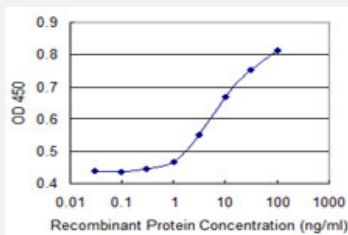
### Western Blot (Tissue lysate)

MAP3K7IP1 monoclonal antibody (M01), clone 2G9. Western Blot analysis of MAP3K7IP1 expression in human pancreas.



### Western Blot (Cell lysate)

MAP3K7IP1 monoclonal antibody (M01), clone 2G9 Western Blot analysis of MAP3K7IP1 expression in 293 ( Cat # L026V1 ).



### Sandwich ELISA (Recombinant protein)

Detection limit for recombinant GST tagged MAP3K7IP1 is 1 ng/ml as a capture antibody.

## Specification

### Product Description

Mouse monoclonal antibody raised against a full length recombinant MAP3K7IP1.

Immunogen	MAP3K7IP1 (AAH50554.1, 1 a.a. ~ 504 a.a) full-length recombinant protein with GST tag. MW of the GST tag alone is 26 KDa.
Sequence	MAAQRRSLLQSEQQPSWTDDLPLCHLSGVGSASNRSYSADGKGTESHPPEDSWLKFRSENNC FLYGVFNGYDGNRVTNFVAQRLSAELLLGQLNAEHAEADVRRVLLQAFDVVERSFLIESIDDALAE KASLQSQLPEGVPQHQLPPQYQKILERLKTLEREISGGAMAVVAVLLNNKLYVANVGTRALLCK STVDGLQVTQLNVDHTTENEDELFRLSQLGLDAGKIKQVGICGQESTRRIGDYKVKYGYTDIDLLS AAKSKPIIAEPEIHGAQPLDGVTGFLVLMSEGLYKALEAAHGPGQANQEIAAMIDTEFAKQTSLDAP AQAVVDRVKRIHSDTFASGGERARFCPRHEDMTLLVRNFGYPLGEMSQPTPSPAPAAGGRVYP VSPYPYSSAQSTSKTSVTLSLVMPSQGMVNGAHSASTLDEATPTLTNQSPTLTLQSTNTHQTSSS SSSDGGLFRSRPAHSLPPGEDGRVEPYVDFAEFYRLWSVDHGEQSVVTAP
Host	Mouse
Reactivity	Human
Isotype	IgG1 Kappa
Quality Control Testing	Antibody Reactive Against Recombinant Protein.
Storage Buffer	In 1x PBS, pH 7.4
Storage Instruction	Store at -20°C or lower. Aliquot to avoid repeated freezing and thawing.

## Applications

- Western Blot (Tissue lysate)

MAP3K7IP1 monoclonal antibody (M01), clone 2G9. Western Blot analysis of MAP3K7IP1 expression in human pancreas.

[Protocol Download](#)

- Western Blot (Cell lysate)

MAP3K7IP1 monoclonal antibody (M01), clone 2G9 Western Blot analysis of MAP3K7IP1 expression in 293 ( Cat # L026V1 ).

[Protocol Download](#)

- Sandwich ELISA (Recombinant protein)

Detection limit for recombinant GST tagged MAP3K7IP1 is 1 ng/ml as a capture antibody.

[Protocol Download](#)

- ELISA

## Gene Info — MAP3K7IP1

Entrez GeneID	<a href="#">10454</a>
GeneBank Accession#	<a href="#">BC050554</a>
Protein Accession#	<a href="#">AAH50554.1</a>
Gene Name	MAP3K7IP1
Gene Alias	3'-Tab1, MGC57664, TAB1
Gene Description	mitogen-activated protein kinase kinase kinase 7 interacting protein 1
Omim ID	<a href="#">602615</a>
Gene Ontology	<a href="#">Hyperlink</a>
Gene Summary	<p>The protein encoded by this gene was identified as a regulator of the MAP kinase kinase kinase MAP3K7/TAK1, which is known to mediate various intracellular signaling pathways, such as those induced by TGF beta, interleukin 1, and WNT-1. This protein interacts and thus activates TAK1 kinase. It has been shown that the C-terminal portion of this protein is sufficient for binding and activation of TAK1, while a portion of the N-terminus acts as a dominant-negative inhibitor of TGF beta, suggesting that this protein may function as a mediator between TGF beta receptors and TAK1. This protein can also interact with and activate the mitogen-activated protein kinase 14 (MAPK 14/p38alpha), and thus represents an alternative activation pathway, in addition to the MAPKK pathways, which contributes to the biological responses of MAPK14 to various stimuli. Alternatively spliced transcript variants encoding distinct isoforms have been reported. [provided by RefSeq]</p>
Other Designations	TAK1-binding protein 1 transforming growth factor beta-activated kinase-binding protein 1

## Pathway

- [MAPK signaling pathway](#)
- [Toll-like receptor signaling pathway](#)

## Disease

- [Arthritis](#)
- [Crohn Disease](#)