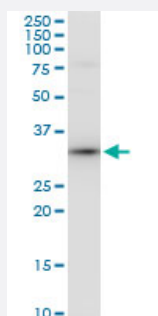


PPIE polyclonal antibody (A01)

Catalog # H00010450-A01

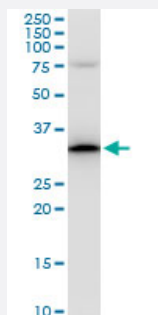
Size 50 uL

Applications



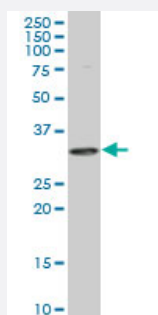
Western Blot (Cell lysate)

PPIE polyclonal antibody (A01), Lot # 060524JCS1. Western Blot analysis of PPIE expression in Raw 264.7.



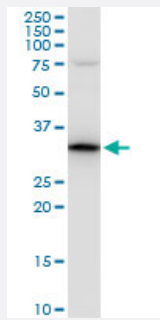
Western Blot (Cell lysate)

PPIE polyclonal antibody (A01), Lot # 060524JCS1. Western Blot analysis of PPIE expression in PC-12.



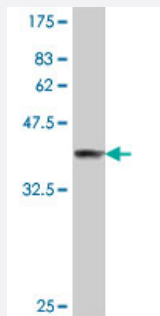
Western Blot (Cell lysate)

PPIE polyclonal antibody (A01), Lot # 060524JCS1 Western Blot analysis of PPIE expression in HeLa S3 NE (Cat # L013V3).



Western Blot (Cell lysate)

PPIE polyclonal antibody (A01), Lot # 060524JCS1. Western Blot analysis of PPIE expression in NIH/3T3.



Western Blot detection against Immunogen (37 KDa) .

Specification

Product Description	Mouse polyclonal antibody raised against a partial recombinant PPIE.
Immunogen	PPIE (NP_006103, 2 a.a. ~ 100 a.a) partial recombinant protein with GST tag.
Sequence	ATTKRVLYVGGLAEEVDDKVLHAAFIPFGDITDIQIPLDYETEKHRGFVFEFELAEDAAAAIDNMN ESELFGRITRVNLAKPMRIKEGSSRPVWSDDD
Host	Mouse
Reactivity	Human, Mouse, Rat
Interspecies Antigen Sequence	Mouse (98)
Quality Control Testing	Antibody Reactive Against Recombinant Protein. Western Blot detection against Immunogen (37 KDa) .
Storage Buffer	50 % glycerol
Storage Instruction	Store at -20°C or lower. Aliquot to avoid repeated freezing and thawing.

Applications

- Western Blot (Cell lysate)

PPIE polyclonal antibody (A01), Lot # 060524JCS1. Western Blot analysis of PPIE expression in Raw 264.7.

[Protocol Download](#)

- Western Blot (Cell lysate)

PPIE polyclonal antibody (A01), Lot # 060524JCS1. Western Blot analysis of PPIE expression in PC-12.

[Protocol Download](#)

- Western Blot (Cell lysate)

PPIE polyclonal antibody (A01), Lot # 060524JCS1 Western Blot analysis of PPIE expression in Hela S3 NE (Cat # L013V3).

[Protocol Download](#)

- Western Blot (Cell lysate)

PPIE polyclonal antibody (A01), Lot # 060524JCS1. Western Blot analysis of PPIE expression in NIH/3T3.

[Protocol Download](#)

- Western Blot (Recombinant protein)

[Protocol Download](#)

- ELISA

Gene Info — PPIE

Entrez GeneID	10450
---------------	-----------------------

GeneBank Accession#	NM_006112
---------------------	---------------------------

Protein Accession#	NP_006103
--------------------	---------------------------

Gene Name	PPIE
-----------	------

Gene Alias	CYP-33, MGC111222, MGC3736
------------	----------------------------

Gene Description	peptidylprolyl isomerase E (cyclophilin E)
------------------	--

Omim ID	602435
---------	------------------------

Gene Ontology	Hyperlink
---------------	---------------------------

Gene Summary

The protein encoded by this gene is a member of the peptidyl-prolyl cis-trans isomerase (PPIase) family. PPIases catalyze the cis-trans isomerization of proline imidic peptide bonds in oligopeptides and accelerate the folding of proteins. This protein contains a highly conserved cyclophilin (CYP) domain as well as an RNA-binding domain. It was shown to possess PPIase and protein folding activities and also exhibit RNA-binding activity. Three alternatively spliced transcript variants encoding distinct isoforms have been observed. [provided by RefSeq]

Other Designations

OTTHUMP00000010837|OTTHUMP00000010838|PPIase E|cyclophilin 33|cyclophilin E|peptidyl-prolyl cis-trans isomerase E|peptidylprolyl isomerase E|peptidylprolyl isomerase E, isoform 1|rotamase E

Disease

- [Obesity](#)