

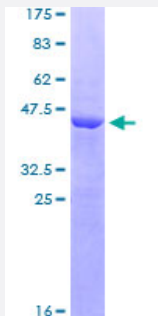
Full-Length

FAM3C (Human) Recombinant Protein (P01)

Catalog # H00010447-P01

Size 25 ug, 10 ug

Applications



Specification

Product Description	Human FAM3C full-length ORF (AAH46932, 25 a.a. - 227 a.a.) recombinant protein with GST-tag at N-terminal.
Sequence	QVFEIKMDASLG NLFARSALDTAARSTKPPRYKCGISKACPEKHFAFKMASGAANVVGPKICLED NVLMSGVKNNVGRGINVALANGKTGEVLDTKYFDMWGGDVAPFIEFLKAIQDGTNLMGTYYDDGA TKLNDEARRLIADLGSTSITNLGFRDNWVFCGGKGIKTKSPFEQHIKNNKDTNKYEGWPEVVEME GCIPQKQD
Host	Wheat Germ (in vitro)
Theoretical MW (kDa)	48.07
Interspecies Antigen Sequence	Mouse (93); Rat (93)
Preparation Method	in vitro wheat germ expression system
Purification	Glutathione Sepharose 4 Fast Flow
Quality Control Testing	12.5% SDS-PAGE Stained with Coomassie Blue
Storage Buffer	50 mM Tris-HCl, 10 mM reduced Glutathione, pH=8.0 in the elution buffer.
Storage Instruction	Store at -80°C. Aliquot to avoid repeated freezing and thawing.

Note

Best use within three months from the date of receipt of this protein.

Applications

- Enzyme-linked Immunoabsorbent Assay
- Western Blot (Recombinant protein)
- Antibody Production
- Protein Array

Gene Info — FAM3C

Entrez GeneID [10447](#)

GeneBank Accession# [BC046932](#)

Protein Accession# [AAH46932](#)

Gene Name FAM3C

Gene Alias GS3786, ILEI

Gene Description family with sequence similarity 3, member C

Omim ID [608618](#)

Gene Ontology [Hyperlink](#)

Gene Summary This gene is a member of the family with sequence similarity 3 (FAM3) family and encodes a secreted protein with a GG domain. A change in expression of this protein has been noted in pancreatic cancer-derived cells. Alternate transcriptional splice variants which encode the same protein have been characterized. [provided by RefSeq]

Other Designations interleukin-like EMT inducer|predicted osteoblast protein

Disease

- [Genetic Predisposition to Disease](#)
- [Tobacco Use Disorder](#)