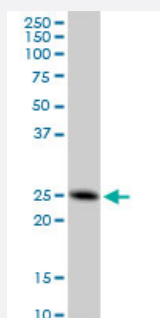


# FAM3C monoclonal antibody (M05), clone 3A3

Catalog # H00010447-M05

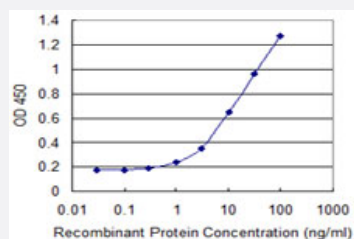
Size 100 ug

## Applications



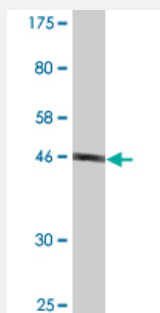
### Western Blot (Cell lysate)

FAM3C monoclonal antibody (M05), clone 3A3. Western Blot analysis of FAM3C expression in A-431 (Cat # L015V1).



### Sandwich ELISA (Recombinant protein)

Detection limit for recombinant GST tagged FAM3C is 0.3 ng/ml as a capture antibody.



Western Blot detection against Immunogen (48.07 KDa).

## Specification

### Product Description

Mouse monoclonal antibody raised against a full-length recombinant FAM3C.

<b>Immunogen</b>	FAM3C (AAH46932, 25 a.a. ~ 227 a.a) full-length recombinant protein with GST tag. MW of the GST tag alone is 26 KDa.
<b>Sequence</b>	QVFEIKMDASLG NLFARSALDTAARSTKPPRYKCGISKACPEKHFAFKMASGAANVVGPKICLED NVLMSGVKNNVGRGINVALANGKTGEVLDTKYFDMWGGDVAPFIEFLKAIQDGTIVLMGTYYDDGA TKLNDEARRLIADLGSTISITNLGFRDNWVFCGGKGIKTKSPFEQHIKNNKDTNKYEGWPEVVEME GCIPQKQD
<b>Host</b>	Mouse
<b>Reactivity</b>	Human
<b>Interspecies Antigen Sequence</b>	Mouse (93); Rat (93)
<b>Isotype</b>	IgG2a Kappa
<b>Quality Control Testing</b>	Antibody Reactive Against Recombinant Protein. Western Blot detection against Immunogen (48.07 KDa) .
<b>Storage Buffer</b>	In 1x PBS, pH 7.4
<b>Storage Instruction</b>	Store at -20°C or lower. Aliquot to avoid repeated freezing and thawing.

## Applications

- Western Blot (Cell lysate)

FAM3C monoclonal antibody (M05), clone 3A3. Western Blot analysis of FAM3C expression in A-431(Cat # L015V1 ).

[Protocol Download](#)

- Western Blot (Recombinant protein)

[Protocol Download](#)

- Sandwich ELISA (Recombinant protein)

Detection limit for recombinant GST tagged FAM3C is 0.3 ng/ml as a capture antibody.

[Protocol Download](#)

- ELISA

## Gene Info — FAM3C

Entrez GeneID	<a href="#">10447</a>
GeneBank Accession#	<a href="#">BC046932</a>
Protein Accession#	<a href="#">AAH46932</a>
Gene Name	FAM3C
Gene Alias	GS3786, ILEI
Gene Description	family with sequence similarity 3, member C
Omim ID	<a href="#">608618</a>
Gene Ontology	<a href="#">Hyperlink</a>
Gene Summary	This gene is a member of the family with sequence similarity 3 (FAM3) family and encodes a secreted protein with a GG domain. A change in expression of this protein has been noted in pancreatic cancer-derived cells. Alternate transcriptional splice variants which encode the same protein have been characterized. [provided by RefSeq]
Other Designations	interleukin-like EMT inducer predicted osteoblast protein

## Disease

- [Genetic Predisposition to Disease](#)
- [Tobacco Use Disorder](#)