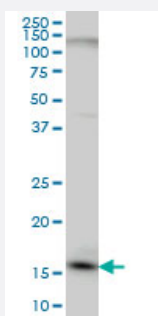


C1D monoclonal antibody (M03A), clone 6H2

Catalog # H00010438-M03A

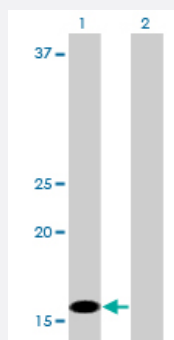
Size 200 uL

Applications



Western Blot (Cell lysate)

C1D monoclonal antibody (M03A), clone 6H2 Western Blot analysis of C1D expression in HeLa (Cat # L013V1).

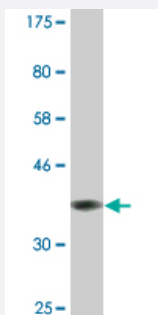


Western Blot (Transfected lysate)

Western Blot analysis of C1D expression in transfected 293T cell line by C1D monoclonal antibody (M03A), clone 6H2.

Lane 1: C1D transfected lysate(16 KDa).

Lane 2: Non-transfected lysate.



Western Blot detection against Immunogen (41.25 KDa) .

Specification

Product Description

Mouse monoclonal antibody raised against a full-length recombinant C1D.

Immunogen	C1D (AAH05235, 1 a.a. ~ 141 a.a) full-length recombinant protein with GST tag. MW of the GST tag alone is 26 KDa.
Sequence	MAGEEINEDYPVEIHEYLSAFENSIGAVDEMLKTMMSVSRNELLQKLDPLEQAKVDLVSAYTLNS MFWVYLATQGVNPKEHPVKQELERIRVYMNRVKEITDKKKAGKLDRGAASRFVKNALWEPKSKN ASKVANKGKSKS
Host	Mouse
Reactivity	Human
Interspecies Antigen Sequence	Mouse (90)
Isotype	IgG2a Kappa
Quality Control Testing	Antibody Reactive Against Recombinant Protein. Western Blot detection against Immunogen (41.25 KDa) .
Storage Buffer	In ascites fluid
Storage Instruction	Store at -20°C or lower. Aliquot to avoid repeated freezing and thawing.

Applications

- Western Blot (Cell lysate)

C1D monoclonal antibody (M03A), clone 6H2 Western Blot analysis of C1D expression in HeLa (Cat # L013V1).

[Protocol Download](#)

- Western Blot (Transfected lysate)

Western Blot analysis of C1D expression in transfected 293T cell line by C1D monoclonal antibody (M03A), clone 6H2.

Lane 1: C1D transfected lysate(16 KDa).

Lane 2: Non-transfected lysate.

[Protocol Download](#)

- Western Blot (Recombinant protein)

[Protocol Download](#)

- ELISA

Gene Info — C1D

Entrez GeneID	10438
GeneBank Accession#	BC005235
Protein Accession#	AAH05235
Gene Name	C1D
Gene Alias	MGC12261, MGC14659, SUNCOR
Gene Description	nuclear DNA-binding protein
Omim ID	606997
Gene Ontology	Hyperlink
Gene Summary	The protein encoded by this gene is a DNA binding and apoptosis-inducing protein and is localized in the nucleus. It is also a Rac3-interacting protein which acts as a corepressor for the thyroid hormone receptor. This protein is thought to regulate TRAX/Translin complex formation. Several alternatively spliced transcript variants of this gene have been described, but the full length nature of some of these variants has not been determined. [provided by RefSeq]
Other Designations	C1D DNA-binding protein small unique nuclear receptor corepressor

Pathway

- [RNA degradation](#)

Disease

- [Birth Weight](#)
- [Genetic Predisposition to Disease](#)
- [Glioblastoma](#)
- [Glioma](#)
- [Leukemia](#)
- [Meningeal Neoplasms](#)
- [Meningioma](#)