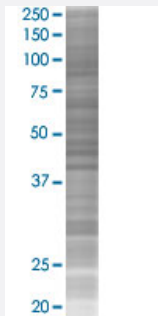


# IFI30 293T Cell Transient Overexpression Lysate(Denatured)

Catalog # H00010437-T02

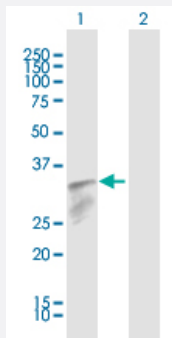
Size 100 uL

## Applications



### SDS-PAGE Gel

IFI30 transfected lysate.



### Western Blot

Lane 1: IFI30 transfected lysate ( 28.00 KDa)

Lane 2: Non-transfected lysate.

## Specification

Transfected Cell Line	293T
Plasmid	pCMV-IFI30 full-length
Host	Human
Theoretical MW (kDa)	28
Interspecies Antigen Sequence	Mouse (62); Rat (62)

## Quality Control Testing

Transient overexpression cell lysate was tested with Anti-IFI30 antibody ([H00010437-D01](#)) by Western Blots.

SDS-PAGE Gel

IFI30 transfected lysate.

Western Blot

Lane 1: IFI30 transfected lysate ( 28.00 KDa)

Lane 2: Non-transfected lysate.

## Storage Buffer

1X Sample Buffer (50 mM Tris-HCl, 2% SDS, 10% glycerol, 300 mM 2-mercaptoethanol, 0.01% Bromophenol blue)

## Storage Instruction

Store at -80°C. Aliquot to avoid repeated freezing and thawing.

## Applications

- Western Blot

## Gene Info — IFI30

## Entrez GeneID

[10437](#)

## GeneBank Accession#

[NM\\_006332](#)

## Protein Accession#

[NP\\_006323.2](#)

## Gene Name

IFI30

## Gene Alias

GILT, IFI-30, IP30, MGC32056

## Gene Description

interferon, gamma-inducible protein 30

## Omim ID

[604664](#)

## Gene Ontology

[Hyperlink](#)

## Gene Summary

The protein encoded by this gene is a lysosomal thiol reductase that at low pH can reduce protein disulfide bonds. The enzyme is expressed constitutively in antigen-presenting cells and induced by gamma-interferon in other cell types. This enzyme has an important role in MHC class II-restricted antigen processing. [provided by RefSeq]

## Other Designations

gamma-interferon-inducible lysosomal thiol reductase|interferon gamma-inducible protein 30 preproprotein

## Pathway

- [Antigen processing and presentation](#)

## Disease

- [Celiac Disease](#)
- [Genetic Predisposition to Disease](#)