

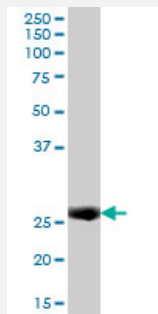
MaxPab®

IFI30 purified MaxPab mouse polyclonal antibody (B01P)

Catalog # H00010437-B01P

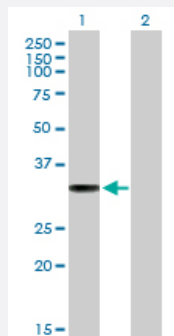
Size 50 ug

Applications



Western Blot (Tissue lysate)

IFI30 MaxPab polyclonal antibody. Western Blot analysis of IFI30 expression in human spleen.



Western Blot (Transfected lysate)

Western Blot analysis of IFI30 expression in transfected 293T cell line by IFI30 MaxPab polyclonal antibody.

Lane 1: IFI30 transfected lysate(27.5 KDa).

Lane 2: Non-transfected lysate.

Specification

Product Description	Mouse polyclonal antibody raised against a full-length human IFI30 protein.
Immunogen	IFI30 (NP_006323, 1 a.a. ~ 250 a.a) full-length human protein.
Sequence	MTLSPLLLFLPPLLLLLDVPTAAVQASPLQALDFFGNGPPVNYKTGNLYLRGPKKSNAPLVNVTLYEALCGGCRAFLIRELFPTWLLVMEILNVTLPYGNAQEQNVSGRWEFKCQHGEEECKFNKVEACVLDELDMELAFLLTVCMEEFEDMERSLPLCLQLYAPGLSPDTIMECAMGDRGMQLMHANAQR TDALQPPHEYVPWVTVNGKPLEDQTQLLTLVCQLYQGKKPDVCPSSTSSLRSVCFK
Host	Mouse
Reactivity	Human

Interspecies Antigen Sequence	Mouse (62); Rat (62)
Quality Control Testing	Antibody reactive against mammalian transfected lysate.
Storage Buffer	In 1x PBS, pH 7.4
Storage Instruction	Store at -20°C or lower. Aliquot to avoid repeated freezing and thawing.

Applications

- Western Blot (Tissue lysate)

IFI30 MaxPab polyclonal antibody. Western Blot analysis of IFI30 expression in human spleen.

[Protocol Download](#)

- Western Blot (Transfected lysate)

Western Blot analysis of IFI30 expression in transfected 293T cell line by IFI30 MaxPab polyclonal antibody.

Lane 1: IFI30 transfected lysate(27.5 KDa).

Lane 2: Non-transfected lysate.

[Protocol Download](#)

Gene Info — IFI30

Entrez GeneID	10437
GeneBank Accession#	NM_006332
Protein Accession#	NP_006323
Gene Name	IFI30
Gene Alias	GILT, IFI-30, IP30, MGC32056
Gene Description	interferon, gamma-inducible protein 30
Omim ID	604664
Gene Ontology	Hyperlink

Gene Summary

The protein encoded by this gene is a lysosomal thiol reductase that at low pH can reduce protein disulfide bonds. The enzyme is expressed constitutively in antigen-presenting cells and induced by gamma-interferon in other cell types. This enzyme has an important role in MHC class II-restricted antigen processing. [provided by RefSeq]

Other Designations

gamma-interferon-inducible lysosomal thiol reductase|interferon gamma-inducible protein 30 prep
roprotein

Pathway

- [Antigen processing and presentation](#)

Disease

- [Celiac Disease](#)
- [Genetic Predisposition to Disease](#)