

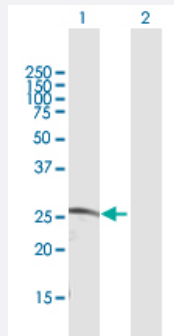
MaxPab®

CDC42EP2 purified MaxPab rabbit polyclonal antibody (D01P)

Catalog # H00010435-D01P

Size 100 ug

Applications



Western Blot (Transfected lysate)

Western Blot analysis of CDC42EP2 expression in transfected 293T cell line ([H00010435-T02](#)) by CDC42EP2 MaxPab polyclonal antibody.

Lane 1: CDC42EP2 transfected lysate(22.50 KDa).

Lane 2: Non-transfected lysate.

Specification

| | |
|-------------------------------|--|
| Product Description | Rabbit polyclonal antibody raised against a full-length human CDC42EP2 protein. |
| Immunogen | CDC42EP2 (NP_006770.1, 1 a.a. ~ 210 a.a) full-length human protein. |
| Sequence | MSTKVPMLKRGSRKGKKEKLRDLLSSDMISPLGDFRHTIHIGSGGGSDMFGDISFLQGKFHLLP GTMVEGPEEDGTFDLPFQFTRTATVCGRELDPGPSPLLKNAISLPVIGGPQALTLP AQAPPKPP RLHLETPQPSPQEGGSVDIWRIPETGSPNSGLTPESGAEEPFLSNASSLLSLHVDLGPSILDDVLQ IMDQDLDSMQIPT |
| Host | Rabbit |
| Reactivity | Human |
| Interspecies Antigen Sequence | Mouse (86); Rat (86) |
| Quality Control Testing | Antibody reactive against mammalian transfected lysate. |
| Storage Buffer | In 1x PBS, pH 7.4 |
| Storage Instruction | Store at -20°C or lower. Aliquot to avoid repeated freezing and thawing. |

Applications

- Western Blot (Transfected lysate)

Western Blot analysis of CDC42EP2 expression in transfected 293T cell line ([H00010435-T02](#)) by CDC42EP2 MaxPab polyclonal antibody.

Lane 1: CDC42EP2 transfected lysate(22.50 KDa).

Lane 2: Non-transfected lysate.

[Protocol Download](#)

Gene Info — CDC42EP2

| | |
|---------------|-----------------------|
| Entrez GeneID | 10435 |
|---------------|-----------------------|

| | |
|---------------------|-----------------------------|
| GeneBank Accession# | NM_006779.2 |
|---------------------|-----------------------------|

| | |
|--------------------|-----------------------------|
| Protein Accession# | NP_006770.1 |
|--------------------|-----------------------------|

| | |
|-----------|----------|
| Gene Name | CDC42EP2 |
|-----------|----------|

| | |
|------------|-------------|
| Gene Alias | BORG1, CEP2 |
|------------|-------------|

| | |
|------------------|---|
| Gene Description | CDC42 effector protein (Rho GTPase binding) 2 |
|------------------|---|

| | |
|---------|------------------------|
| Omim ID | 606132 |
|---------|------------------------|

| | |
|---------------|---------------------------|
| Gene Ontology | Hyperlink |
|---------------|---------------------------|

| | |
|--------------|---|
| Gene Summary | CDC42, a small Rho GTPase, regulates the formation of F-actin-containing structures through its interaction with the downstream effector proteins. The protein encoded by this gene is a member of the Borg family of CDC42 effector proteins. Borg family proteins contain a CRIB (Cdc42/Rac interactive-binding) domain. They bind to, and negatively regulate the function of, CDC42. Coexpression of this protein with dominant negative mutant CDC42 protein in fibroblast was found to induce pseudopodia formation, which suggested a role of this protein in actin filament assembly and cell shape control. [provided by RefSeq] |
|--------------|---|

| | |
|--------------------|--|
| Other Designations | CRIB-containing BOGR1 protein Cdc42 effector protein 2 |
|--------------------|--|