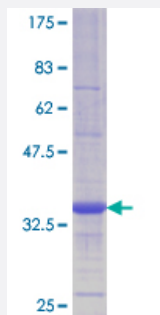


# LYPLA1 (Human) Recombinant Protein (Q03)

Catalog # H00010434-Q03

Size 25 ug, 10 ug

## Applications



## Specification

<b>Product Description</b>	Human LYPLA1 partial ORF ( AAH08652.1, 66 a.a. - 151 a.a.) recombinant protein with GST-tag at N-terminal.
<b>Sequence</b>	NVAMPSWFDIIGLSPDSQEDESIGKQAAENIKALIDQEVKNGIPSNRIILGGFSQGGALSLYTALTTQ QKLAGVTALSCWLPLRAS
<b>Host</b>	Wheat Germ (in vitro)
<b>Theoretical MW (kDa)</b>	35.2
<b>Interspecies Antigen Sequence</b>	Mouse (91); Rat (92)
<b>Preparation Method</b>	<a href="#">in vitro wheat germ expression system</a>
<b>Purification</b>	Glutathione Sepharose 4 Fast Flow
<b>Quality Control Testing</b>	12.5% SDS-PAGE Stained with Coomassie Blue.
<b>Storage Buffer</b>	50 mM Tris-HCl, 10 mM reduced Glutathione, pH=8.0 in the elution buffer.
<b>Storage Instruction</b>	Store at -80°C. Aliquot to avoid repeated freezing and thawing.
<b>Note</b>	Best use within three months from the date of receipt of this protein.

## Applications

- Enzyme-linked Immunoabsorbent Assay
- Western Blot (Recombinant protein)
- Antibody Production
- Protein Array

## Gene Info — LYPLA1

Entrez GeneID [10434](#)

GeneBank Accession# [BC008652](#)

Protein Accession# [AAH08652.1](#)

Gene Name LYPLA1

Gene Alias APT-1, LPL1, LYSOPLA

Gene Description lysophospholipase I

Omim ID [605599](#)

Gene Ontology [Hyperlink](#)

**Gene Summary** Lysophospholipases are enzymes that act on biological membranes to regulate the multifunctional lysophospholipids. The protein encoded by this gene hydrolyzes lysophosphatidylcholine in both monomeric and micellar forms. The use of alternate polyadenylation sites has been found for this gene. There are alternatively spliced transcript variants described for this gene but the full length nature is not known yet. [provided by RefSeq]

**Other Designations** acyl-protein thioesterase-1|lysophospholipase 1|lysophospholipid-specific lysophospholipase

## Pathway

- [Glycerophospholipid metabolism](#)