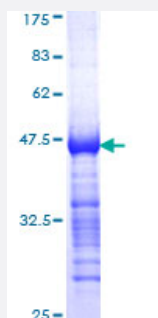


# TESK2 (Human) Recombinant Protein (Q01)

Catalog # H00010420-Q01

Size 25 ug, 10 ug

## Applications



## Specification

<b>Product Description</b>	Human TESK2 partial ORF ( AAH33085, 405 a.a. - 542 a.a.) recombinant protein with GST-tag at N-terminal.
<b>Sequence</b>	GPGTMPLADWQEPLAPPIRRWCSLPGSPEFLHQEACPFVGREESLSDGPPRLSSLKYRVKEIP PFRASALPAAQAHEAMDCSILQEENGFGSRPQGTSPCPAGASEEMEVEERPAGSTPATFSTSGI GLQTQGKQDG
<b>Host</b>	Wheat Germ (in vitro)
<b>Theoretical MW (kDa)</b>	40.81
<b>Interspecies Antigen Sequence</b>	Mouse (82); Rat (84)
<b>Preparation Method</b>	<a href="#">in vitro wheat germ expression system</a>
<b>Purification</b>	Glutathione Sepharose 4 Fast Flow
<b>Quality Control Testing</b>	12.5% SDS-PAGE Stained with Coomassie Blue.
<b>Storage Buffer</b>	50 mM Tris-HCl, 10 mM reduced Glutathione, pH=8.0 in the elution buffer.
<b>Storage Instruction</b>	Store at -80°C. Aliquot to avoid repeated freezing and thawing.
<b>Note</b>	Best use within three months from the date of receipt of this protein.

## Applications

- Enzyme-linked Immunoabsorbent Assay
- Western Blot (Recombinant protein)
- Antibody Production
- Protein Array

## Gene Info — TESK2

Entrez GeneID [10420](#)

GeneBank Accession# [BC033085](#)

Protein Accession# [AAH33085](#)

Gene Name TESK2

Gene Alias -

Gene Description testis-specific kinase 2

Omim ID [604746](#)

Gene Ontology [Hyperlink](#)

**Gene Summary** This gene product is a serine/threonine protein kinase that contains an N-terminal protein kinase domain that is structurally similar to the kinase domains of testis-specific protein kinase-1 and the LIM motif-containing protein kinases (LIMKs). Its overall structure is most related to the former, indicating that it belongs to the TESK subgroup of the LIMK/TESK family of protein kinases. This gene is predominantly expressed in testis and prostate. The developmental expression pattern of the rat gene in testis suggests an important role for this gene in meiotic stages and/or early stages of spermiogenesis. [provided by RefSeq]

**Other Designations** OTTHUMP00000009093|testis-specific protein kinase 2