

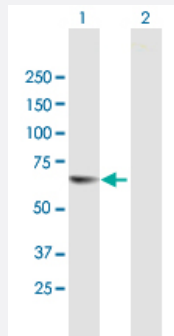
MaxPab®

TESK2 purified MaxPab mouse polyclonal antibody (B01P)

Catalog # H00010420-B01P

Size 50 ug

Applications



Western Blot (Transfected lysate)

Western Blot analysis of TSK2 expression in transfected 293T cell line ([H00010420-T02](#)) by TSK2 MaxPab polyclonal antibody.

Lane 1: TSK2 transfected lysate(60.30 KDa).

Lane 2: Non-transfected lysate.

Specification

Product Description

Mouse polyclonal antibody raised against a full-length human TSK2 protein.

Immunogen

TESK2 (AAH33085.1, 1 a.a. ~ 542 a.a) full-length human protein.

Sequence

MDRSKRNSIAGFPPRVERLEEFEGGGGEGNVSQVGRVWPSSYRALISAFSRLTRLDDFTCEKI
GSGFFSEVFKVRHRASGQVMALKMNTLSSNRANMLKEVQLMNRLSHPNILRFMGVCVHQQLH
ALTEYINSGNLEQLLDSNLHLPWTVRVKLAYDIAVGLSYLHFKGIFHRDLTSKNCLIKRDENGYSVV
ADFGLAEKIPDVSMGSEKLAVVGSPFWMAPEVLRDEPYNEKADVFSYGILCEIARIQADPDYLP
TEMDPKLRPSFVEIGKTLEEILSRLQEEEQERDRKLQPTARGLLEKAPGVKRLSSLDDKIPHKSPC
PRRTIWLRSQSDIFSRKPPRTVSVLDPYRPRDGAARTPKVNPFSARQDLMGGKIKFFDLPSKS
VISLVFDLDAPGPGTMPLADWQEPLAPPIRRWCSLPGSPEFLHQEACPFVGREESLSDGPPRL
SSLKYRVKEIPFRASALPAAQAHEAMDCSILQEENGFGSRPQGTSPCPAGASEEMEVEERPAG
STPATFSTSGIGLQTQKGQDG

Host

Mouse

Reactivity

Human

Interspecies Antigen Sequence

Mouse (82); Rat (84)

Quality Control Testing

Antibody reactive against mammalian transfected lysate.

Storage Buffer

In 1x PBS, pH 7.4

Storage Instruction

Store at -20°C or lower. Aliquot to avoid repeated freezing and thawing.

Applications

- Western Blot (Transfected lysate)

Western Blot analysis of TESK2 expression in transfected 293T cell line ([H00010420-T02](#)) by TESK2 MaxPab polyclonal antibody.

Lane 1: TESK2 transfected lysate(60.30 KDa).

Lane 2: Non-transfected lysate.

[Protocol Download](#)

Gene Info — TESK2

Entrez GeneID[10420](#)**GeneBank Accession#**[BC033085.1](#)**Protein Accession#**[AAH33085.1](#)**Gene Name**

TESK2

Gene Alias

-

Gene Description

testis-specific kinase 2

Omim ID[604746](#)**Gene Ontology**[Hyperlink](#)**Gene Summary**

This gene product is a serine/threonine protein kinase that contains an N-terminal protein kinase domain that is structurally similar to the kinase domains of testis-specific protein kinase-1 and the LIM motif-containing protein kinases (LIMKs). Its overall structure is most related to the former, indicating that it belongs to the TESK subgroup of the LIMK/TESK family of protein kinases. This gene is predominantly expressed in testis and prostate. The developmental expression pattern of the rat gene in testis suggests an important role for this gene in meiotic stages and/or early stages of spermiogenesis. [provided by RefSeq]

Other Designations

OTTHUMP00000009093|testis-specific protein kinase 2