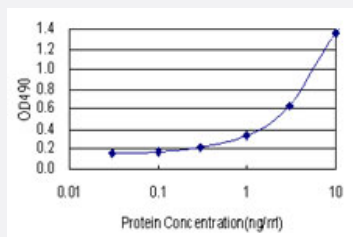


YAP1 (Human) Matched Antibody Pair

Catalog # H00010413-AP11 Size 1 Set

Applications



Sandwich ELISA detection sensitivity ranging from 0.1 ng/ml to 100 ng/ml.

Specification

Product Description	This antibody pair set comes with a matched antibody pair to detect and quantify the protein level of human YAP1.
Reactivity	Human
Interspecies Antigen Sequence	Mouse (85)
Quality Control Testing	Standard curve using recombinant protein (H00010413-P01) as an analyte. Sandwich ELISA detection sensitivity ranging from 0.1 ng/ml to 100 ng/ml.
Supplied Product	Antibody pair set content: 1. Capture antibody: rabbit MaxPab® affinity purified polyclonal anti-YAP1 (100 ug) 2. Detection antibody: mouse monoclonal anti-YAP1, IgG2a Kappa (20 ug) *Reagents are sufficient for at least 1-2 x 96 well plates using recommended protocols.
Storage Instruction	Store reagents of the antibody pair set at -20°C or lower. Please aliquot to avoid repeated freeze thaw cycle. Reagents should be returned to -20°C storage immediately after use.

Applications

- ELISA Pair (Recombinant protein)

[Protocol Download](#)

Gene Info — YAP1

Entrez GeneID [10413](#)

Gene Name YAP1

Gene Alias YAP, YAP2, YAP65, YKI

Gene Description Yes-associated protein 1, 65kDa

Omim ID [606608](#)

Gene Ontology [Hyperlink](#)

Gene Summary This gene encodes the human ortholog of chicken YAP protein which binds to the SH3 domain of the Yes proto-oncogene product. This protein contains a WW domain that is found in various structural, regulatory and signaling molecules in yeast, nematode, and mammals, and may be involved in protein-protein interaction. [provided by RefSeq]

Other Designations yes-associated protein 2

Disease

- [Tobacco Use Disorder](#)