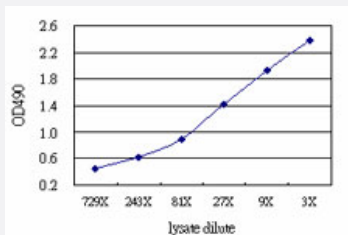


IFITM3 (Human) Matched Antibody Pair

Catalog # H00010410-AP61

Size 1 Set

Applications



Sandwich ELISA detection sensitivity ranging from approximately 729x to 3x dilution of the IFITM3 293T overexpression lysate (non-denatured).

Specification

Product Description

This antibody pair set comes with a matched antibody pair to detect and quantify the protein level of human IFITM3.

Reactivity

Human

Quality Control Testing

Standard curve using IFITM3 293T overexpression lysate (non-denatured) as an analyte. Sandwich ELISA detection sensitivity ranging from approximately 729x to 3x dilution of the IFITM3 293T overexpression lysate (non-denatured).

Supplied Product

Antibody pair set content:

1. Capture antibody: mouse monoclonal anti-IFITM3 (100 ug)
 2. Detection antibody: rabbit MaxPab® affinity purified polyclonal anti-IFITM3 (50 ug)
- *Reagents are sufficient for at least 3-5 x 96 well plates using recommended protocols.

Storage Instruction

Store reagents of the antibody pair set at -20°C or lower. Please aliquot to avoid repeated freeze thaw cycle. Reagents should be returned to -20°C storage immediately after use.

Applications

- ELISA Pair (Transfected lysate)

[Protocol Download](#)

Gene Info — IFITM3

Entrez GeneID	10410
Gene Name	IFITM3
Gene Alias	1-8U, IP15
Gene Description	interferon induced transmembrane protein 3 (1-8U)
Omim ID	605579
Gene Ontology	Hyperlink
Other Designations	interferon-induced transmembrane protein 3 (1-8U) interferon-inducible

Disease

- [Colitis](#)
- [Genetic Predisposition to Disease](#)