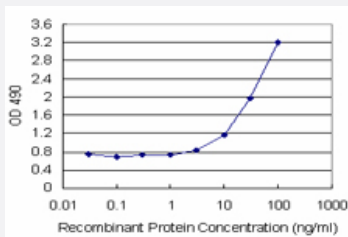


# IFITM3 (Human) Matched Antibody Pair

Catalog # H00010410-AP11

Size 1 Set

## Applications



Sandwich ELISA detection sensitivity ranging from 3 ng/ml to 100 ng/ml.

## Specification

<b>Product Description</b>	This antibody pair set comes with a matched antibody pair to detect and quantify the protein level of human IFITM3.
<b>Reactivity</b>	Human
<b>Quality Control Testing</b>	Standard curve using recombinant protein ( H00010410-P01 ) as an analyte. Sandwich ELISA detection sensitivity ranging from 3 ng/ml to 100 ng/ml.
<b>Supplied Product</b>	Antibody pair set content: 1. Capture antibody: rabbit MaxPab® affinity purified polyclonal anti-IFITM3 (100 ug) 2. Detection antibody: mouse monoclonal anti-IFITM3, IgG1 Kappa (20 ug) *Reagents are sufficient for at least 1-2 x 96 well plates using recommended protocols.
<b>Storage Instruction</b>	Store reagents of the antibody pair set at -20°C or lower. Please aliquot to avoid repeated freeze thaw cycle. Reagents should be returned to -20°C storage immediately after use.

## Applications

- ELISA Pair (Recombinant protein)

[Protocol Download](#)

## Gene Info — IFITM3

Entrez GeneID	<a href="#">10410</a>
Gene Name	IFITM3
Gene Alias	1-8U, IP15
Gene Description	interferon induced transmembrane protein 3 (1-8U)
Omim ID	<a href="#">605579</a>
Gene Ontology	<a href="#">Hyperlink</a>
Other Designations	interferon-induced transmembrane protein 3 (1-8U) interferon-inducible

## Disease

- [Colitis](#)
- [Genetic Predisposition to Disease](#)