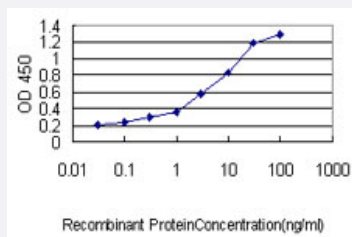


WFDC2 monoclonal antibody (M01), clone 3F9

Catalog # H00010406-M01

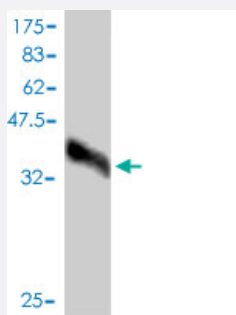
Size 100 ug

Applications



Sandwich ELISA (Recombinant protein)

Detection limit for recombinant GST tagged WFDC2 is approximately 0.03ng/ml as a capture antibody.



Western Blot detection against Immunogen (36.08 KDa) .

Specification

Product Description	Mouse monoclonal antibody raised against a full length recombinant WFDC2.
Immunogen	WFDC2 (AAH46106.1, 31 a.a. ~ 124 a.a) full-length recombinant protein with GST tag. MW of the GST tag alone is 26 KDa.
Sequence	EKTGVCPELQADQNCTQECVSDSECADNLKCCSAGCATFCSLPNDKEGSCPQVNINFPQLGLC RDQCQVDSQCPGQMKCCRNGCGKVSCVTPNF
Host	Mouse
Reactivity	Human

Interspecies Antigen Sequence	Mouse (44); Rat (43)
Isotype	IgG2b kappa
Quality Control Testing	Antibody Reactive Against Recombinant Protein. Western Blot detection against Immunogen (36.08 KDa) .
Storage Buffer	In 1x PBS, pH 7.4
Storage Instruction	Store at -20°C or lower. Aliquot to avoid repeated freezing and thawing.

Applications

- Western Blot (Recombinant protein)

[Protocol Download](#)

- Sandwich ELISA (Recombinant protein)

Detection limit for recombinant GST tagged WFDC2 is approximately 0.03ng/ml as a capture antibody.

[Protocol Download](#)

- ELISA

Gene Info — WFDC2

Entrez GeneID	10406
GeneBank Accession#	BC046106
Protein Accession#	AAH46106.1
Gene Name	WFDC2
Gene Alias	HE4, MGC57529, WAP5, dJ461P17.6
Gene Description	WAP four-disulfide core domain 2
Gene Ontology	Hyperlink

Gene Summary

This gene encodes a protein that is a member of the WFDC domain family. The WFDC domain, or WAP Signature motif, contains eight cysteines forming four disulfide bonds at the core of the protein, and functions as a protease inhibitor in many family members. This gene is expressed in pulmonary epithelial cells, and was also found to be expressed in some ovarian cancers. The encoded protein is a small secretory protein, which may be involved in sperm maturation. [provided by RefSeq]

Other Designations

OTTHUMP00000031141|WAP domain containing protein HE4-V4|epididymal secretory protein E4|epididymis-specific, whey-acidic protein type, four-disulfide core|major epididymis-specific protein E4

Publication Reference

- [Detection of serum human epididymis secretory protein 4 in patients with ovarian cancer using a label-free biosensor based on localized surface plasmon resonance.](#)

Yuan J, Duan R, Yang H, Luo X, Xi M.

International Journal of Nanomedicine 2012 Jun; 7:2921.

Application: Func, ELISA, Human, Human serum specimens