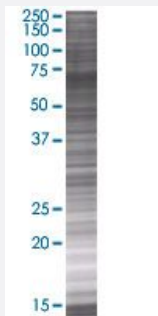


KNTC2 293T Cell Transient Overexpression Lysate(Denatured)

Catalog # H00010403-T01

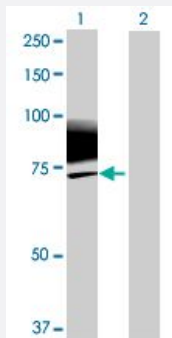
Size 100 uL

Applications



SDS-PAGE Gel

NDC80 transfected lysate.



Western Blot

Lane 1: NDC80 transfected lysate (70.73 KDa)

Lane 2: Non-transfected lysate.

Specification

Transfected Cell Line	293T
Plasmid	pCMV-KNTC2 full-length
Host	Human
Theoretical MW (kDa)	70.73
Interspecies Antigen Sequence	Mouse (83); Rat (84)

Quality Control Testing

Transient overexpression cell lysate was tested with Anti-KNTC2 antibody ([H00010403-B01](#)) by Western Blots.
SDS-PAGE Gel
NDC80 transfected lysate.
Western Blot
Lane 1: NDC80 transfected lysate (70.73 KDa)
Lane 2: Non-transfected lysate.

Storage Buffer

1X Sample Buffer (50 mM Tris-HCl, 2% SDS, 10% glycerol, 300 mM 2-mercaptoethanol, 0.01% Bromophenol blue)

Storage Instruction

Store at -80°C. Aliquot to avoid repeated freezing and thawing.

Applications

- Western Blot

Gene Info — NDC80

Entrez GeneID[10403](#)**GeneBank Accession#**[NM_006101](#)**Protein Accession#**[NP_006092](#)**Gene Name**

NDC80

Gene Alias

HEC, HEC1, KNTC2, TID3, hsNDC80

Gene Description

NDC80 homolog, kinetochore complex component (S. cerevisiae)

Omim ID[607272](#)**Gene Ontology**[Hyperlink](#)**Gene Summary**

HEC is one of several proteins involved in spindle checkpoint signaling. This surveillance mechanism assures correct segregation of chromosomes during cell division by detecting unaligned chromosomes and causing prometaphase arrest until the proper bipolar attachment of chromosomes is achieved.[supplied by OMIM]

Other Designations

highly expressed in cancer, rich in leucine heptad repeats|kinetochore associated 2

Disease

- [Kidney Failure](#)