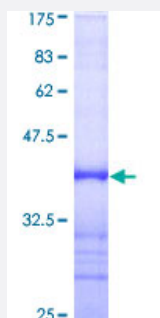


KNTC2 (Human) Recombinant Protein (Q01)

Catalog # H00010403-Q01

Size 25 ug, 10 ug

Applications



Specification

Product Description	Human KNTC2 partial ORF (AAH35617, 545 a.a. - 642 a.a.) recombinant protein with GST-tag at N-terminal.
Sequence	TVNQGLSEAMNELDAVQREYQLVVQTTTEERRKVGNNLQRLLQLEMVATHVGSVEKHLEEQIAKVD REYEECMSEDLSENIKEIRDKYEKKATLIKSSEE
Host	Wheat Germ (in vitro)
Theoretical MW (kDa)	36.19
Interspecies Antigen Sequence	Mouse (83); Rat (84)
Preparation Method	in vitro wheat germ expression system
Purification	Glutathione Sepharose 4 Fast Flow
Quality Control Testing	12.5% SDS-PAGE Stained with Coomassie Blue.
Storage Buffer	50 mM Tris-HCl, 10 mM reduced Glutathione, pH=8.0 in the elution buffer.
Storage Instruction	Store at -80°C. Aliquot to avoid repeated freezing and thawing.
Note	Best use within three months from the date of receipt of this protein.

Applications

- Enzyme-linked Immunoabsorbent Assay
- Western Blot (Recombinant protein)
- Antibody Production
- Protein Array

Gene Info — NDC80

Entrez GeneID [10403](#)

GeneBank Accession# [BC035617](#)

Protein Accession# [AAH35617](#)

Gene Name NDC80

Gene Alias HEC, HEC1, KNTC2, TID3, hsNDC80

Gene Description NDC80 homolog, kinetochore complex component (S. cerevisiae)

Omim ID [607272](#)

Gene Ontology [Hyperlink](#)

Gene Summary HEC is one of several proteins involved in spindle checkpoint signaling. This surveillance mechanism assures correct segregation of chromosomes during cell division by detecting unaligned chromosomes and causing prometaphase arrest until the proper bipolar attachment of chromosomes is achieved.[supplied by OMIM]

Other Designations highly expressed in cancer, rich in leucine heptad repeats|kinetochore associated 2

Disease

- [Kidney Failure](#)