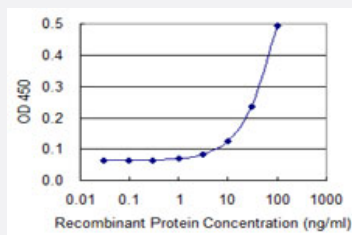


MYL9 monoclonal antibody (M02), clone 3F2

Catalog # H00010398-M02

Size 100 ug

Applications



Sandwich ELISA (Recombinant protein)

Detection limit for recombinant GST tagged MYL9 is 3 ng/ml as a capture antibody.



Western Blot detection against Immunogen (38.72 KDa) .

Specification

Product Description	Mouse monoclonal antibody raised against a full length recombinant MYL9.
Immunogen	MYL9 (AAH02648.1, 1 a.a. ~ 118 a.a) full-length recombinant protein with GST tag. MW of the GST tag alone is 26 KDa.
Sequence	MSSKRAKAKTTKKRPQRATSNVFAMFDQSQIQEFKEAFNMIDQNRDGFIDKEDLHDMLASLGFIH EDHLRELLTTMGDRFTDEEVDEMYREAPIDKKGNFNVEFTRILKHGAKDKDD
Host	Mouse
Reactivity	Human

Interspecies Antigen Sequence	Mouse (62); Rat (61)
Isotype	IgG2b Kappa
Quality Control Testing	Antibody Reactive Against Recombinant Protein. Western Blot detection against Immunogen (38.72 KDa) .
Storage Buffer	In 1x PBS, pH 7.4
Storage Instruction	Store at -20°C or lower. Aliquot to avoid repeated freezing and thawing.

Applications

- Western Blot (Recombinant protein)

[Protocol Download](#)

- Sandwich ELISA (Recombinant protein)

Detection limit for recombinant GST tagged MYL9 is 3 ng/ml as a capture antibody.

[Protocol Download](#)

- ELISA

Gene Info — MYL9

Entrez GeneID	10398
GeneBank Accession#	BC002648
Protein Accession#	AAH02648.1
Gene Name	MYL9
Gene Alias	LC20, MGC3505, MLC2, MRLC1, MYRL2
Gene Description	myosin, light chain 9, regulatory
Omim ID	609905
Gene Ontology	Hyperlink

Gene Summary

Myosin, a structural component of muscle, consists of two heavy chains and four light chains. The protein encoded by this gene is a myosin light chain that may regulate muscle contraction by modulating the ATPase activity of myosin heads. The encoded protein binds calcium and is activated by myosin light chain kinase. Two transcript variants encoding different isoforms have been found for this gene. [provided by RefSeq]

Other Designations

OTTHUMP00000030857|myosin RLC|myosin regulatory light chain 2, smooth muscle isoform|myosin regulatory light chain 9|myosin, light polypeptide 9, regulatory

Pathway

- [Focal adhesion](#)
- [Leukocyte transendothelial migration](#)
- [Regulation of actin cytoskeleton](#)
- [Tight junction](#)
- [Vascular smooth muscle contraction](#)