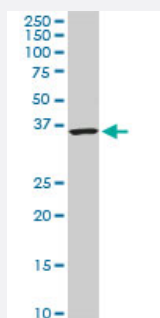


CACNG3 monoclonal antibody (M01), clone 3E4

Catalog # H00010368-M01

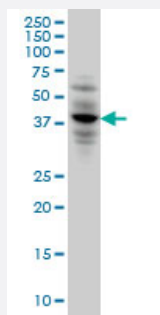
Size 100 ug

Applications



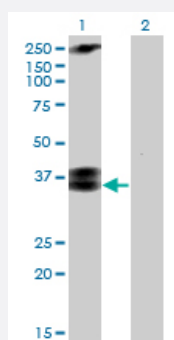
Western Blot (Cell lysate)

CACNG3 monoclonal antibody (M01), clone 3E4. Western Blot analysis of CACNG3 expression in PC-12(Cat # L012V1).



Western Blot (Cell lysate)

CACNG3 monoclonal antibody (M01), clone 3E4 Western Blot analysis of CACNG3 expression in HeLa (Cat # L013V1).



Western Blot (Transfected lysate)

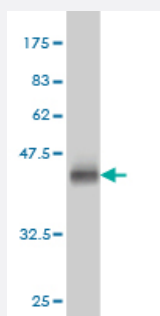
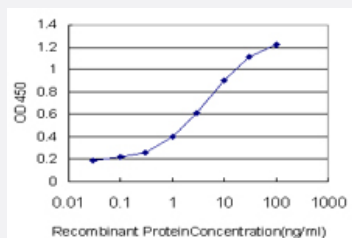
Western Blot analysis of CACNG3 expression in transfected 293T cell line by CACNG3 monoclonal antibody (M01), clone 3E4.

Lane 1: CACNG3 transfected lysate(35.5 KDa).

Lane 2: Non-transfected lysate.

Sandwich ELISA (Recombinant protein)

Detection limit for recombinant GST tagged CACNG3 is approximately 0.3ng/ml as a capture antibody.



Western Blot detection against Immunogen (36.63 KDa) .

Specification

| | |
|--------------------------------|---|
| Product Description | Mouse monoclonal antibody raised against a partial recombinant CACNG3. |
| Immunogen | CACNG3 (NP_006530, 199 a.a. ~ 297 a.a) partial recombinant protein with GST tag. MW of the GST tag alone is 26 KDa. |
| Sequence | MEKHQQLRAKSHSEFLKKSTFARLPPYRYRFRSSSRSTEPSRDLSPISKGFHTIPSTDISMFTLSRDPSKITMGTLNNSDRDHAFLQFHNSTPK |
| Host | Mouse |
| Reactivity | Human, Rat |
| Isotype | IgG1 Kappa |
| Quality Control Testing | Antibody Reactive Against Recombinant Protein. Western Blot detection against Immunogen (36.63 KDa) . |
| Storage Buffer | In 1x PBS, pH 7.4 |
| Storage Instruction | Store at -20°C or lower. Aliquot to avoid repeated freezing and thawing. |

Applications

- Western Blot (Cell lysate)

CACNG3 monoclonal antibody (M01), clone 3E4. Western Blot analysis of CACNG3 expression in PC-12(Cat # L012V1).

[Protocol Download](#)

- Western Blot (Cell lysate)

CACNG3 monoclonal antibody (M01), clone 3E4 Western Blot analysis of CACNG3 expression in HeLa (Cat # L013V1).

[Protocol Download](#)

- Western Blot (Transfected lysate)

Western Blot analysis of CACNG3 expression in transfected 293T cell line by CACNG3 monoclonal antibody (M01), clone 3E4.

Lane 1: CACNG3 transfected lysate(35.5 KDa).

Lane 2: Non-transfected lysate.

[Protocol Download](#)

- Western Blot (Recombinant protein)

[Protocol Download](#)

- Sandwich ELISA (Recombinant protein)

Detection limit for recombinant GST tagged CACNG3 is approximately 0.3ng/ml as a capture antibody.

[Protocol Download](#)

- ELISA

Gene Info — CACNG3

| | |
|---------------|-----------------------|
| Entrez GeneID | 10368 |
|---------------|-----------------------|

| | |
|---------------------|---------------------------|
| GeneBank Accession# | NM_006539 |
|---------------------|---------------------------|

| | |
|--------------------|---------------------------|
| Protein Accession# | NP_006530 |
|--------------------|---------------------------|

| | |
|-----------|--------|
| Gene Name | CACNG3 |
|-----------|--------|

| | |
|------------|--------|
| Gene Alias | Cacng2 |
|------------|--------|

| | |
|------------------|---|
| Gene Description | calcium channel, voltage-dependent, gamma subunit 3 |
|------------------|---|

| | |
|---------|------------------------|
| Omim ID | 606403 |
|---------|------------------------|

Gene Ontology

[Hyperlink](#)

Gene Summary

L-type calcium channels are composed of five subunits. The protein encoded by this gene represents one of these subunits, gamma, and is one of several gamma subunit proteins. It is an integral membrane protein that is thought to stabilize the calcium channel in an inactive (closed) state. This protein is similar to the mouse stargazin protein, mutations in which have been associated with absence seizures, also known as petit-mal or spike-wave seizures. This gene is a member of the neuronal calcium channel gamma subunit gene subfamily of the PMP-22/EMP/MP20 family. This gene is a candidate gene for a familial infantile convulsive disorder with paroxysmal choreoathetosis. [provided by RefSeq]

Other Designations

neuronal voltage-gated calcium channel gamma-3 subunit|voltage-dependent calcium channel gamma-3 subunit|voltage-gated calcium channel gamma subunit

Pathway

- [Arrhythmogenic right ventricular cardiomyopathy \(ARVC\)](#)
- [Cardiac muscle contraction](#)
- [Hypertrophic cardiomyopathy \(HCM\)](#)
- [MAPK signaling pathway](#)

Disease

- [Epilepsy](#)
- [Genetic Predisposition to Disease](#)
- [Seizures](#)