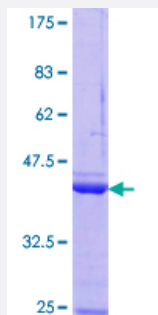


NPM3 (Human) Recombinant Protein (Q01)

Catalog # H00010360-Q01

Size 25 ug, 10 ug

Applications



Specification

| | |
|--------------------------------------|---|
| Product Description | Human NPM3 partial ORF (NP_008924.1, 31 a.a. - 140 a.a.) recombinant protein with GST-tag at N-terminal. |
| Sequence | PVTMDSFFFGCELSGHTRSFTFKVEEEDDAEHVLALTMLCLTEGAKDECNVVEVVARNHDHQEI AVPVANLKLSCQPMLSLDDFQLQPPVTFRLLKSGSGPVRITGRHQIV |
| Host | Wheat Germ (in vitro) |
| Theoretical MW (kDa) | 37.84 |
| Interspecies Antigen Sequence | Mouse (85); Rat (82) |
| Preparation Method | in vitro wheat germ expression system |
| Purification | Glutathione Sepharose 4 Fast Flow |
| Quality Control Testing | 12.5% SDS-PAGE Stained with Coomassie Blue. |
| Storage Buffer | 50 mM Tris-HCl, 10 mM reduced Glutathione, pH=8.0 in the elution buffer. |
| Storage Instruction | Store at -80°C. Aliquot to avoid repeated freezing and thawing. |
| Note | Best use within three months from the date of receipt of this protein. |

Applications

- Enzyme-linked Immunoabsorbent Assay
- Western Blot (Recombinant protein)
- Antibody Production
- Protein Array

Gene Info — NPM3

Entrez GeneID [10360](#)

GeneBank Accession# [NM_006993](#)

Protein Accession# [NP_008924.1](#)

Gene Name NPM3

Gene Alias PORMIN, TMEM123

Gene Description nucleophosmin/nucleoplasmin, 3

Omim ID [606456](#)

Gene Ontology [Hyperlink](#)

Gene Summary The protein encoded by this gene is related to the nuclear chaperone phosphoproteins, nucleoplasmin and nucleophosmin. This protein is strongly expressed in diverse cell types where it localizes primarily to the nucleus. Based on its similarity to nucleoplasmin and nucleophosmin, this protein likely functions as a molecular chaperone in the cell nucleus. [provided by RefSeq]

Other Designations OTTHUMP00000020352|nucleophosmin/nucleoplasmin 3|nucleophosmin/nucleoplasmin family, member 3|nucleoplasmin-3