

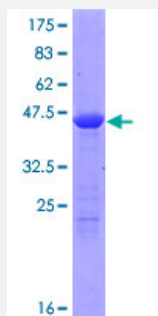
Full-Length

NPM3 (Human) Recombinant Protein (P01)

Catalog # H00010360-P01

Size 25 ug, 10 ug

Applications



Specification

Product Description	Human NPM3 full-length ORF (NP_008924.1, 1 a.a. - 178 a.a.) recombinant protein with GST-tag at N-terminal.
Sequence	MAAGTAAALAFLSQESRTRAGGVGGLRVPAVPTMDSFFFGCELSGHTRSFTFKVEEEDDAEHV LALTMLCLTEGAKDECNVVEVVARNHQHQEIAPVANLKLSCQPMLSLDDFQLQPPVTFRLKSG SGPVRITGRHQVITMSNDVSEEESEEEEEEDSDEEEVELCPILPAKKQGGRP
Host	Wheat Germ (in vitro)
Theoretical MW (kDa)	45.7
Interspecies Antigen Sequence	Mouse (85); Rat (82)
Preparation Method	in vitro wheat germ expression system
Purification	Glutathione Sepharose 4 Fast Flow
Quality Control Testing	12.5% SDS-PAGE Stained with Coomassie Blue.
Storage Buffer	50 mM Tris-HCl, 10 mM reduced Glutathione, pH=8.0 in the elution buffer.
Storage Instruction	Store at -80°C. Aliquot to avoid repeated freezing and thawing.

Note

Best use within three months from the date of receipt of this protein.

Applications

- Enzyme-linked Immunoabsorbent Assay
- Western Blot (Recombinant protein)
- Antibody Production
- Protein Array

Gene Info — NPM3

Entrez GeneID [10360](#)**GeneBank Accession#** [NM_006993.1](#)**Protein Accession#** [NP_008924.1](#)**Gene Name** NPM3**Gene Alias** PORMIN, TMEM123**Gene Description** nucleophosmin/nucleoplasmin, 3**Omim ID** [606456](#)**Gene Ontology** [Hyperlink](#)

Gene Summary The protein encoded by this gene is related to the nuclear chaperone phosphoproteins, nucleoplasmin and nucleophosmin. This protein is strongly expressed in diverse cell types where it localizes primarily to the nucleus. Based on its similarity to nucleoplasmin and nucleophosmin, this protein likely functions as a molecular chaperone in the cell nucleus. [provided by RefSeq]

Other Designations OTTHUMP00000020352|nucleophosmin/nucleoplasmin 3|nucleophosmin/nucleoplasmin family, member 3|nucleoplasmin-3