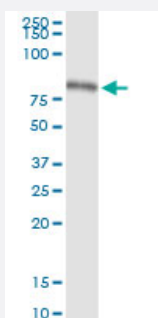


# TRIM22 (Human) IP-WB Antibody Pair

Catalog # H00010346-PW1

Size 1 Set

## Applications



Immunoprecipitation of TRIM22 transfected lysate using rabbit polyclonal anti-TRIM22 and Protein A Magnetic Bead ([U0007](#)), and immunoblotted with mouse purified polyclonal anti-TRIM22.

## Specification

<b>Product Description</b>	This IP-WB antibody pair set comes with one antibody for immunoprecipitation and another to detect the precipitated protein in western blot.
<b>Reactivity</b>	Human
<b>Quality Control Testing</b>	Immunoprecipitation-Western Blot (IP-WB) Immunoprecipitation of TRIM22 transfected lysate using rabbit polyclonal anti-TRIM22 and Protein A Magnetic Bead ( <a href="#">U0007</a> ), and immunoblotted with mouse purified polyclonal anti-TRIM22.
<b>Supplied Product</b>	Antibody pair set content: 1. Antibody pair for IP: rabbit polyclonal anti-TRIM22 (300 ul) 2. Antibody pair for WB: mouse purified polyclonal anti-TRIM22 (50 ug)
<b>Storage Instruction</b>	Store reagents of the antibody pair set at -20°C or lower. Please aliquot to avoid repeated freeze thaw cycle. Reagents should be returned to -20°C storage immediately after use.

## Applications

- Immunoprecipitation-Western Blot

[Protocol Download](#)

## Gene Info — TRIM22

**Entrez GeneID** [10346](#)**Gene Name** TRIM22**Gene Alias** GPSTAF50, RNF94, STAF50**Gene Description** tripartite motif-containing 22**Omim ID** [606559](#)**Gene Ontology** [Hyperlink](#)

**Gene Summary** The protein encoded by this gene is a member of the tripartite motif (TRIM) family. The TRIM motif includes three zinc-binding domains, a RING, a B-box type 1 and a B-box type 2, and a coiled-coil region. This protein localizes to the cytoplasm and its expression is induced by interferon. The protein down-regulates transcription from the HIV-1 LTR promoter region, suggesting that function of this protein may be to mediate interferon's antiviral effects. [provided by RefSeq]

**Other Designations** OTTHUMP00000069823|stimulated trans-acting factor (50 kDa)|tripartite binding motif 22|tripartite motif protein TRIM22