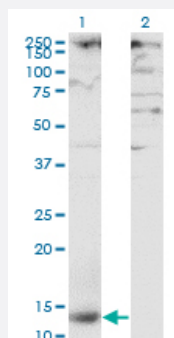


CLEC4M monoclonal antibody (M01), clone 2G1

Catalog # H00010332-M01

Size 100 ug

Applications

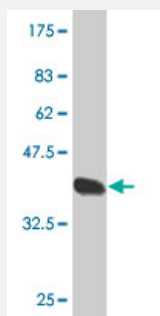


Western Blot (Transfected lysate)

Western Blot analysis of CLEC4M expression in transfected 293T cell line by CLEC4M monoclonal antibody (M01), clone 2G1.

Lane 1: CLEC4M transfected lysate (Predicted MW: 12.21 kDa).

Lane 2: Non-transfected lysate.



Western Blot detection against Immunogen (37.84 kDa) .

Specification

Product Description	Mouse monoclonal antibody raised against a partial recombinant CLEC4M.
Immunogen	CLEC4M (NP_055072, 285 a.a. ~ 394 a.a) partial recombinant protein with GST tag. MW of the GST tag alone is 26 kDa.
Sequence	SQRNWHDSVTACQEVRAQLVVIKTAEEQNFLQLQTSRSNRFSSWMGLSDLNQEGTWQWVDGSP LSPSFQRYWNSGEPNNSGNEDCAEFSGSGWNDNRCDVDNYWICKKPAA
Host	Mouse
Reactivity	Human

Interspecies Antigen Sequence	Mouse (60); Rat (61)
Isotype	IgG3 Lambda
Quality Control Testing	Antibody Reactive Against Recombinant Protein. Western Blot detection against Immunogen (37.84 KDa) .
Storage Buffer	In 1x PBS, pH 7.4
Storage Instruction	Store at -20°C or lower. Aliquot to avoid repeated freezing and thawing.

Applications

- Western Blot (Transfected lysate)

Western Blot analysis of CLEC4M expression in transfected 293T cell line by CLEC4M monoclonal antibody (M01), clone 2G1.

Lane 1: CLEC4M transfected lysate (Predicted MW: 12.21 KDa).

Lane 2: Non-transfected lysate.

[Protocol Download](#)

- Western Blot (Recombinant protein)

[Protocol Download](#)

- ELISA

Gene Info — CLEC4M

Entrez GeneID	10332
GeneBank Accession#	NM_014257
Protein Accession#	NP_055072
Gene Name	CLEC4M
Gene Alias	CD209L, CD299, DC-SIGN2, DC-SIGNR, DCSIGNR, HP10347, L-SIGN, LSIGN, MGC129964, MGC47866
Gene Description	C-type lectin domain family 4, member M
Omim ID	605872

Gene Ontology

[Hyperlink](#)

Gene Summary

This gene encodes a transmembrane receptor and is often referred to as L-SIGN because of its expression in the endothelial cells of the lymph nodes and liver. The encoded protein is involved in the innate immune system and recognizes numerous evolutionarily divergent pathogens ranging from parasites to viruses, with a large impact on public health. The protein is organized into three distinct domains: an N-terminal transmembrane domain, a tandem-repeat neck domain and C-type lectin carbohydrate recognition domain. The extracellular region consisting of the C-type lectin and neck domains has a dual function as a pathogen recognition receptor and a cell adhesion receptor by binding carbohydrate ligands on the surface of microbes and endogenous cells. The neck region is important for homo-oligomerization which allows the receptor to bind multivalent ligands with high avidity. Variations in the number of 23 amino acid repeats in the neck domain of this protein are common and have a significant impact on ligand binding ability. This gene is closely related in terms of both sequence and function to a neighboring gene (GeneID 30835; often referred to as DC-SIGN or CD209). DC-SIGN and L-SIGN differ in their ligand-binding properties and distribution. Alternative splicing results in multiple variants

Other Designations

CD209 antigen-like|CD299 antigen|dendritic cell-specific ICAM-3-grabbing nonintegrin 2|liver/lymph node-specific ICAM-3 grabbing non-integrin|mannose binding C-type lectin DC-SIGNR

Disease

- [Communicable Diseases](#)
- [Disease Susceptibility](#)
- [Genetic Predisposition to Disease](#)
- [Hepatitis C](#)
- [HIV Infections](#)
- [HIV Seropositivity](#)
- [Severe Acute Respiratory Syndrome](#)
- [Sexually Transmitted Diseases](#)