

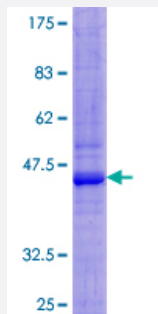
Full-Length

# SIRPB1 (Human) Recombinant Protein (P01)

Catalog # H00010326-P01

Size 25 ug, 10 ug

## Applications



## Specification

Product Description	Human SIRPB1 full-length ORF ( AAH75835.1, 1 a.a. - 181 a.a.) recombinant protein with GST-tag at N-terminal.
Sequence	MPVPASWPHLPSPFLLMTLLLGRLTGVAGEDELQVIQPEKSVSVAAGESATLRCAMTSLIPVGPI MWFRGAGAGRELYNQKEGHFPRVTTVSELTKRNNLDFSISINITPADAGTYCVKFRKGSPDDV EFKSGAGTELSVREPALAPTAPLLVALLLGPKLLLVGVSAIMCWKQKA
Host	Wheat Germ (in vitro)
Theoretical MW (kDa)	45.8
Interspecies Antigen Sequence	Mouse (51)
Preparation Method	<a href="#">in vitro wheat germ expression system</a>
Purification	Glutathione Sepharose 4 Fast Flow
Quality Control Testing	12.5% SDS-PAGE Stained with Coomassie Blue.
Storage Buffer	50 mM Tris-HCl, 10 mM reduced Glutathione, pH=8.0 in the elution buffer.
Storage Instruction	Store at -80°C. Aliquot to avoid repeated freezing and thawing.

## Note

Best use within three months from the date of receipt of this protein.

## Applications

- Enzyme-linked Immunoabsorbent Assay
- Western Blot (Recombinant protein)
- Antibody Production
- Protein Array

## Gene Info — SIRPB1

Entrez GeneID [10326](#)

GeneBank Accession# [BC075835.1](#)

Protein Accession# [AAH75835.1](#)

Gene Name SIRPB1

Gene Alias CD172b, DKFZp686A05192, FLJ26614, SIRP-BETA-1

Gene Description signal-regulatory protein beta 1

Omim ID [603889](#)

Gene Ontology [Hyperlink](#)

**Gene Summary** The protein encoded by this gene is a member of the signal-regulatory-protein (SIRP) family, and also belongs to the immunoglobulin superfamily. SIRP family members are receptor-type transmembrane glycoproteins known to be involved in the negative regulation of receptor tyrosine kinase-coupled signaling processes. This protein was found to interact with TYROBP/DAP12, a protein bearing immunoreceptor tyrosine-based activation motifs. This protein was also reported to participate in the recruitment of tyrosine kinase SYK. Multiple transcript variants encoding different isoforms have been found for this gene. [provided by RefSeq]

**Other Designations** OTTHUMP00000029992|OTTHUMP00000029993