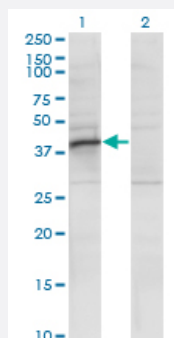


RRAGB monoclonal antibody (M01), clone 2B8

Catalog # H00010325-M01

Size 100 ug

Applications

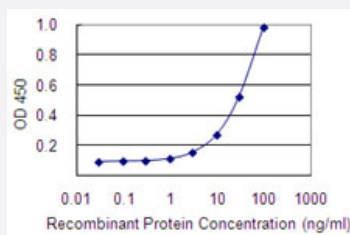


Western Blot (Transfected lysate)

Western Blot analysis of RRAGB expression in transfected 293T cell line by RRAGB monoclonal antibody (M01), clone 2B8.

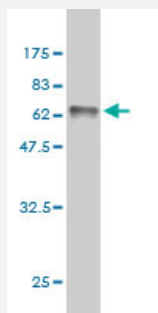
Lane 1: RRAGB transfected lysate (43.3 KDa).

Lane 2: Non-transfected lysate.



Sandwich ELISA (Recombinant protein)

Detection limit for recombinant GST tagged RRAGB is 1 ng/ml as a capture antibody.



Western Blot detection against Immunogen (63.8 KDa).

Specification

Product Description

Mouse monoclonal antibody raised against a full length recombinant RRAGB.

Immunogen	RRAGB (AAH34726, 1 a.a. ~ 346 a.a) full-length recombinant protein with GST tag. MW of the GST tag alone is 26 KDa.
Sequence	MEESDSEKTEKENLGPRMDPPLGEPEGSLGWVLPNTAMKKKVLLMGKSGSGKTSMRSIIFANYI ARDTRRLGATIDVEHSHVRFLGNLVLNLWDCGGQDTFMENYFTSQRDNIFRNVEVLIVFDVESRE LEKDMHYQSCLEAILQNSPDAKIFCLVHKMDLVQEDQRDLIFKEREEDLRRLSRPLECSCFRTSI WDETLKAWSSIVYQLIPNVQQLEMNLRNFAEIIIEADEVLLFERATFLVISHYQCKEQRDAHRFEKIS NIIKQFKLSCKLAASFQSMEVRNSNFAAFIDIFTSNTYVMVVMSDPSIPSAATLINIRNARKHFEKLE RVDGPKQCCLLMR
Host	Mouse
Reactivity	Human
Interspecies Antigen Sequence	Mouse (90)
Isotype	IgG2a kappa
Quality Control Testing	Antibody Reactive Against Recombinant Protein. Western Blot detection against Immunogen (63.8 KDa) .
Storage Buffer	In 1x PBS, pH 7.4
Storage Instruction	Store at -20°C or lower. Aliquot to avoid repeated freezing and thawing.

Applications

- Western Blot (Transfected lysate)

Western Blot analysis of RRAGB expression in transfected 293T cell line by RRAGB monoclonal antibody (M01), clone 2B8.

Lane 1: RRAGB transfected lysate(43.3 KDa).

Lane 2: Non-transfected lysate.

[Protocol Download](#)

- Western Blot (Recombinant protein)

[Protocol Download](#)

- Sandwich ELISA (Recombinant protein)

Detection limit for recombinant GST tagged RRAGB is 1 ng/ml as a capture antibody.

[Protocol Download](#)

- ELISA

Gene Info — RRAGB

Entrez GeneID [10325](#)

GeneBank Accession# [BC034726](#)

Protein Accession# [AAH34726](#)

Gene Name RRAGB

Gene Alias RAGB, bA465E19.1

Gene Description Ras-related GTP binding B

Gene Ontology [Hyperlink](#)

Gene Summary Ras-homologous GTPases constitute a large family of signal transducers that alternate between an activated, GTP-binding state and an inactivated, GDP-binding state. These proteins represent cellular switches that are operated by GTP-exchange factors and factors that stimulate their intrinsic GTPase activity. All GTPases of the Ras superfamily have in common the presence of six conserved motifs involved in GTP/GDP binding, three of which are phosphate-/magnesium-binding sites (PM1-PM3) and three of which are guanine nucleotide-binding sites (G1-G3). Transcript variants encoding distinct isoforms have been identified. [provided by RefSeq]

Other Designations GTP-binding protein ragB|OTTHUMP00000023402|OTTHUMP00000023403

Disease

- [Disease Progression](#)
- [Disease Susceptibility](#)
- [HIV Infections](#)