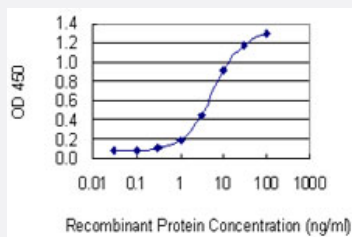


LANCL1 monoclonal antibody (M01), clone 9A12

Catalog # H00010314-M01

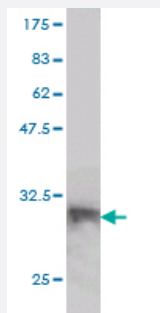
Size 100 ug

Applications



Sandwich ELISA (Recombinant protein)

Detection limit for recombinant GST tagged LANCL1 is 0.3 ng/ml as a capture antibody.



Western Blot detection against Immunogen (32.12 KDa) .

Specification

Product Description	Mouse monoclonal antibody raised against a partial recombinant LANCL1.
Immunogen	LANCL1 (NP_006046, 1 a.a. ~ 58 a.a) partial recombinant protein with GST tag. MW of the GST tag alone is 26 KDa.
Sequence	MAQRAFPNPYADYNKSLAEGYFDAAGRLTPEFSQRLTNKIRELLQQMERGLKSADPRD
Host	Mouse
Reactivity	Human
Isotype	IgG2a Kappa

Quality Control Testing

Antibody Reactive Against Recombinant Protein.
Western Blot detection against Immunogen (32.12 KDa) .

Storage Buffer

In 1x PBS, pH 7.4

Storage Instruction

Store at -20°C or lower. Aliquot to avoid repeated freezing and thawing.

Applications

- Western Blot (Recombinant protein)

[Protocol Download](#)

- Sandwich ELISA (Recombinant protein)

Detection limit for recombinant GST tagged LANCL1 is 0.3 ng/ml as a capture antibody.

[Protocol Download](#)

- ELISA

Gene Info — LANCL1

Entrez GeneID

[10314](#)

GeneBank Accession#

[NM_006055](#)

Protein Accession#

[NP_006046](#)

Gene Name

LANCL1

Gene Alias

GPR69A, p40

Gene Description

LanC lantibiotic synthetase component C-like 1 (bacterial)

Omim ID

[604155](#)

Gene Ontology

[Hyperlink](#)

Gene Summary

This gene encodes a loosely associated peripheral membrane protein related to the LanC family of bacterial membrane-associated proteins involved in the biosynthesis of antimicrobial peptides. This protein may play a role as a peptide-modifying enzyme component in eukaryotic cells. Previously considered a member of the G-protein-coupled receptor superfamily, this protein is now in the LanC family. Multiple alternatively spliced variants, encoding the same protein, have been identified. [provided by RefSeq]

Other Designations

G protein-coupled receptor 69A|LanC (bacterial lantibiotic synthetase component C)-like 1|LanC (bacterial lantibiotic synthetase component)|lanthionine synthetase C-like protein 1
