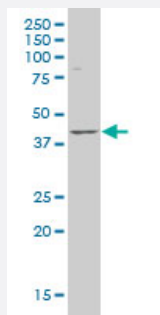


# LANCL1 polyclonal antibody (A01)

Catalog # H00010314-A01

Size 50 uL

## Applications



### Western Blot (Tissue lysate)

LANCL1 polyclonal antibody (A01), Lot # 050914JC01. Western Blot analysis of LANCL1 expression in human ovarian cancer.

## Specification

<b>Product Description</b>	Mouse polyclonal antibody raised against a partial recombinant LANCL1.
<b>Immunogen</b>	LANCL1 (NP_006046, 1 a.a. ~ 58 a.a) partial recombinant protein with GST tag.
<b>Sequence</b>	MAQRAFPNPYADYNKSLAEGYFDAAGRLTPEFSQRLTNKIRELLQQMERGLKSADPRD
<b>Host</b>	Mouse
<b>Reactivity</b>	Human
<b>Quality Control Testing</b>	Antibody Reactive Against Recombinant Protein.
<b>Storage Buffer</b>	50 % glycerol
<b>Storage Instruction</b>	Store at -20°C or lower. Aliquot to avoid repeated freezing and thawing.

## Applications

- Western Blot (Tissue lysate)

LANCL1 polyclonal antibody (A01), Lot # 050914JC01. Western Blot analysis of LANCL1 expression in human ovarian cancer.

[Protocol Download](#)

- ELISA

## Gene Info — LANCL1

Entrez GeneID [10314](#)

GeneBank Accession# [NM\\_006055](#)

Protein Accession# [NP\\_006046](#)

Gene Name LANCL1

Gene Alias GPR69A, p40

Gene Description LanC lantibiotic synthetase component C-like 1 (bacterial)

Omim ID [604155](#)

Gene Ontology [Hyperlink](#)

**Gene Summary** This gene encodes a loosely associated peripheral membrane protein related to the LanC family of bacterial membrane-associated proteins involved in the biosynthesis of antimicrobial peptides. This protein may play a role as a peptide-modifying enzyme component in eukaryotic cells. Previously considered a member of the G-protein-coupled receptor superfamily, this protein is now in the LanC family. Multiple alternatively spliced variants, encoding the same protein, have been identified. [provided by RefSeq]

**Other Designations** G protein-coupled receptor 69A|LanC (bacterial lantibiotic synthetase component C)-like 1|LanC (bacterial lantibiotic synthetase component)|lanthionine synthetase C-like protein 1

## Publication Reference

- [LANCL1, a cell surface protein, promotes liver tumor initiation through FAM49B-Rac1 axis to suppress oxidative stress.](#)

Hongyang Huang, Yu-Man Tsui, Daniel Wai-Hung Ho, Clive Yik-Sham Chung, Karen Man-Fong Sze, Eva Lee, Gary Cheuk-Hang Cheung, Vanilla Xin Zhang, Xia Wang, Xueying Lyu, Irene Oi-Lin Ng

Hepatology 2023 Aug; [Epub]:0.

Application: Stimulation, Human, PLC/PRF/5 cells

- [Lantibiotic Cyclase-like protein 2 \(LanCL2\) is a novel regulator of Akt.](#)

Zeng M, van der Donk WA, Chen J.

Molecular Biology of the Cell 2014 Dec; 25(24):3954.

Application: WB-Ce, WB-Tr, Human, HepG2, Hep3B, HEK293, Ea1C-35, THLE-2, MCF7, HeLa cells

- [Lanthionine synthetase C-like protein 1 interacts with and inhibits cystathionine beta-synthase: a target for neuronal antioxidant defense.](#)

Zhong WX, Wang YB, Peng L, Ge XZ, Zhang J, Liu SS, Zhang XN, Xu ZH, Chen Z, Luo JH.

The Journal of Biological Chemistry 2012 Oct; 287(41):34189.

Application: WB, Human, Mouse, Neuron, HEK293 cells