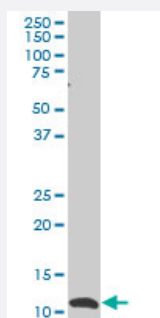


# SNAPC5 monoclonal antibody (M02), clone 5C3

Catalog # H00010302-M02

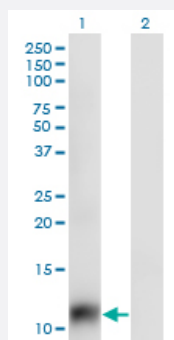
Size 100 ug

## Applications



### Western Blot (Cell lysate)

SNAPC5 monoclonal antibody (M02), clone 5C3 Western Blot analysis of SNAPC5 expression in HL-60 ( Cat # L014V1 ).

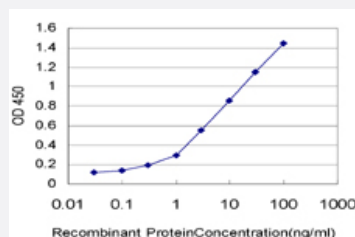


### Western Blot (Transfected lysate)

Western Blot analysis of SNAPC5 expression in transfected 293T cell line by SNAPC5 monoclonal antibody (M02), clone 5C3.

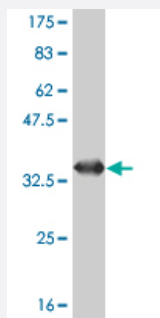
Lane 1: SNAPC5 transfected lysate(8 KDa).

Lane 2: Non-transfected lysate.



### Sandwich ELISA (Recombinant protein)

Detection limit for recombinant GST tagged SNAPC5 is approximately 0.1ng/ml as a capture antibody.



Western Blot detection against Immunogen (33.22 KDa) .

## Specification

<b>Product Description</b>	Mouse monoclonal antibody raised against a full length recombinant SNAPC5.
<b>Immunogen</b>	SNAPC5 (AAH14315, 1 a.a. ~ 68 a.a) full-length recombinant protein with GST tag. MW of the GST tag alone is 26 KDa.
<b>Sequence</b>	MLSRLQELRKEEETLLRLKAALHDQLNRLKMLVHVDNEASINQTTLELSTKSHVTEEEEEEEEEEE SDS
<b>Host</b>	Mouse
<b>Reactivity</b>	Human
<b>Interspecies Antigen Sequence</b>	Mouse (57); Rat (59)
<b>Isotype</b>	IgG2a Kappa
<b>Quality Control Testing</b>	Antibody Reactive Against Recombinant Protein. Western Blot detection against Immunogen (33.22 KDa) .
<b>Storage Buffer</b>	In 1x PBS, pH 7.4
<b>Storage Instruction</b>	Store at -20°C or lower. Aliquot to avoid repeated freezing and thawing.

## Applications

- Western Blot (Cell lysate)

SNAPC5 monoclonal antibody (M02), clone 5C3 Western Blot analysis of SNAPC5 expression in HL-60 ( Cat # L014V1 ).

[Protocol Download](#)

- Western Blot (Transfected lysate)

Western Blot analysis of SNAPC5 expression in transfected 293T cell line by SNAPC5 monoclonal antibody (M02), clone 5C3.

Lane 1: SNAPC5 transfected lysate(8 KDa).

Lane 2: Non-transfected lysate.

[Protocol Download](#)

- Western Blot (Recombinant protein)

[Protocol Download](#)

- Sandwich ELISA (Recombinant protein)

Detection limit for recombinant GST tagged SNAPC5 is approximately 0.1ng/ml as a capture antibody.

[Protocol Download](#)

- ELISA

## Gene Info — SNAPC5

Entrez GeneID	<a href="#">10302</a>
---------------	-----------------------

GeneBank Accession#	<a href="#">BC014315</a>
---------------------	--------------------------

Protein Accession#	<a href="#">AAH14315</a>
--------------------	--------------------------

Gene Name	SNAPC5
-----------	--------

Gene Alias	SNAP19
------------	--------

Gene Description	small nuclear RNA activating complex, polypeptide 5, 19kDa
------------------	--

Omim ID	<a href="#">605979</a>
---------	------------------------

Gene Ontology	<a href="#">Hyperlink</a>
---------------	---------------------------

Gene Summary	polypeptide 5
--------------	---------------

Other Designations	OTTHUMP00000164251 small nuclear RNA activating complex, polypeptide 5
--------------------	--