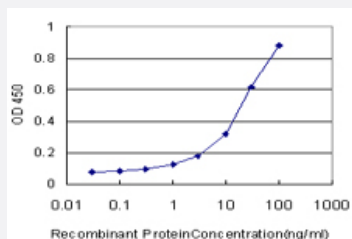


MARCH6 monoclonal antibody (M02), clone 2F7

Catalog # H00010299-M02

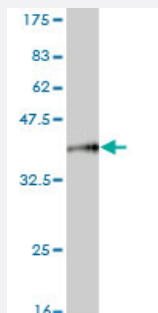
Size 100 ug

Applications



Sandwich ELISA (Recombinant protein)

Detection limit for recombinant GST tagged MARCH6 is approximately 0.3ng/ml as a capture antibody.



Western Blot detection against Immunogen (35.64 KDa) .

Specification

Product Description	Mouse monoclonal antibody raised against a partial recombinant MARCH6.
Immunogen	MARCH6 (NP_005876, 2 a.a. ~ 91 a.a) partial recombinant protein with GST tag. MW of the GST tag alone is 26 KDa.
Sequence	DTAEEDICRVCRSEGTPEKPLYHPCVCTGSIKFIHQECLVQWLKHSRKEYCELCKHRFAFTPIYSP DMPSRLPIQDIFAGLVTSIGTAIR
Host	Mouse
Reactivity	Human

Interspecies Antigen Sequence	Mouse (97)
Isotype	IgG2a Kappa
Quality Control Testing	Antibody Reactive Against Recombinant Protein. Western Blot detection against Immunogen (35.64 KDa) .
Storage Buffer	In 1x PBS, pH 7.4
Storage Instruction	Store at -20°C or lower. Aliquot to avoid repeated freezing and thawing.

Applications

- Western Blot (Recombinant protein)

[Protocol Download](#)

- Sandwich ELISA (Recombinant protein)

Detection limit for recombinant GST tagged MARCH6 is approximately 0.3ng/ml as a capture antibody.

[Protocol Download](#)

- ELISA

Gene Info — MARCH6

Entrez GeneID	10299
GeneBank Accession#	NM_005885
Protein Accession#	NP_005876
Gene Name	MARCH6
Gene Alias	KIAA0597, MARCH-VI, RNF176, TEB4
Gene Description	membrane-associated ring finger (C3HC4) 6
Gene Ontology	Hyperlink
Other Designations	membrane-associated RING-CH protein VI