

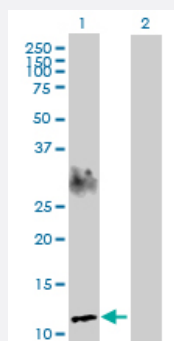
MaxPab®

SPEG purified MaxPab rabbit polyclonal antibody (D01P)

Catalog # H00010290-D01P

Size 100 ug

Applications



Western Blot (Transfected lysate)

Western Blot analysis of SPEG expression in transfected 293T cell line ([H00010290-T01](#)) by SPEG MaxPab polyclonal antibody.

Lane 1: SPEG transfected lysate(12.70 KDa).

Lane 2: Non-transfected lysate.

Specification

Product Description	Rabbit polyclonal antibody raised against a full-length human SPEG protein.
Immunogen	SPEG (AAH06346.1, 1 a.a. ~ 113 a.a) full-length human protein.
Sequence	MKPSPSQNRRSSDTGSKAPPTFKVSLMDQSVREGQDVIMSIRVQGEPKPVVSWLRNRQPVRPD QRRFAEEAEGGLCRLRLILAAERGDAGFYTKAVNEYGARQCEARLEVRGE
Host	Rabbit
Reactivity	Human
Interspecies Antigen Sequence	Mouse (94); Rat (96)
Quality Control Testing	Antibody reactive against mammalian transfected lysate.
Storage Buffer	In 1x PBS, pH 7.4
Storage Instruction	Store at -20°C or lower. Aliquot to avoid repeated freezing and thawing.

Applications

- Western Blot (Transfected lysate)

Western Blot analysis of SPEG expression in transfected 293T cell line ([H00010290-T01](#)) by SPEG MaxPab polyclonal antibody.

Lane 1: SPEG transfected lysate(12.70 KDa).

Lane 2: Non-transfected lysate.

[Protocol Download](#)

Gene Info — SPEG

Entrez GeneID [10290](#)

GeneBank Accession# [BC006346.2](#)

Protein Accession# [AAH06346.1](#)

Gene Name SPEG

Gene Alias APEG1, BPEG, KIAA1297, MGC12676, SPEGalpha, SPEGbeta

Gene Description SPEG complex locus

Gene Ontology [Hyperlink](#)

Gene Summary Expression of this gene is thought to serve as a marker for differentiated vascular smooth muscle cells which may have a role in regulating growth and differentiation of this cell type. The encoded protein is highly similar to the corresponding rat and mouse proteins. Multiple alternatively spliced transcript variants have been found for this gene, but the full-length nature of only one variant has been defined. [provided by RefSeq]

Other Designations OTTHUMP00000064868|aortic preferentially expressed gene 1|aortic preferentially expressed protein 1|nuclear protein, marker for differentiated aortic smooth muscle and down-regulated with vascular injury|striated muscle preferentially expressed protein

Disease

- [Cardiovascular Diseases](#)
- [Diabetes Mellitus](#)
- [Edema](#)