

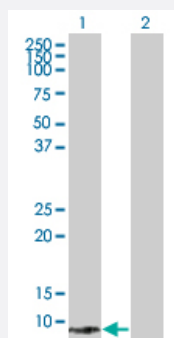
MaxPab®

# APEG1 MaxPab mouse polyclonal antibody (B01)

Catalog # H00010290-B01

Size 50 uL

## Applications



### Western Blot (Transfected lysate)

Western Blot analysis of APEG1 expression in transfected 293T cell line ([H00010290-T01](#)) by APEG1 MaxPab polyclonal antibody.

Lane 1: APEG1 transfected lysate(12.43 KDa).

Lane 2: Non-transfected lysate.

## Specification

Product Description	Mouse polyclonal antibody raised against a full-length human APEG1 protein.
Immunogen	APEG1 (AAH06346.1, 1 a.a. ~ 113 a.a) full-length human protein.
Sequence	MKPSPSQNRRSSDTGSKAPPTFKVSLMDQSVREGQDVIMSIRVQGEPKPVVSWLRNRQPVRPD QRRFAEEAEGGLCRLRLAAERGDAGFYTCKAVNEYGARQCEARLEVRGE
Host	Mouse
Reactivity	Human
Interspecies Antigen Sequence	Mouse (94); Rat (96)
Quality Control Testing	Antibody reactive against mammalian transfected lysate.
Storage Buffer	No additive
Storage Instruction	Store at -20°C or lower. Aliquot to avoid repeated freezing and thawing.
Note	For IHC and IF applications, antibody purification with Protein A will be needed prior to use.

## Applications

- Western Blot (Transfected lysate)

Western Blot analysis of SPEG expression in transfected 293T cell line ([H00010290-T01](#)) by SPEG MaxPab polyclonal antibody.

Lane 1: APEG1 transfected lysate(12.43 KDa).

Lane 2: Non-transfected lysate.

[Protocol Download](#)

## Gene Info — SPEG

Entrez GeneID [10290](#)

GeneBank Accession# [BC006346.2](#)

Protein Accession# [AAH06346.1](#)

Gene Name SPEG

Gene Alias APEG1, BPEG, KIAA1297, MGC12676, SPEGalpha, SPEGbeta

Gene Description SPEG complex locus

Gene Ontology [Hyperlink](#)

**Gene Summary** Expression of this gene is thought to serve as a marker for differentiated vascular smooth muscle cells which may have a role in regulating growth and differentiation of this cell type. The encoded protein is highly similar to the corresponding rat and mouse proteins. Multiple alternatively spliced transcript variants have been found for this gene, but the full-length nature of only one variant has been defined. [provided by RefSeq]

**Other Designations** OTTHUMP00000064868|aortic preferentially expressed gene 1|aortic preferentially expressed protein 1|nuclear protein, marker for differentiated aortic smooth muscle and down-regulated with vascular injury|striated muscle preferentially expressed protein

## Disease

- [Cardiovascular Diseases](#)
- [Diabetes Mellitus](#)
- [Edema](#)