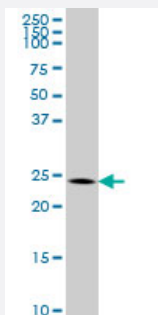


BCAS2 monoclonal antibody (M01), clone 1D10

Catalog # H00010286-M01

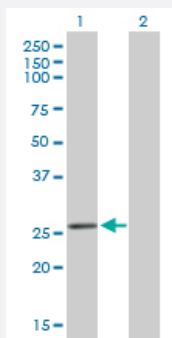
Size 100 ug

Applications



Western Blot (Cell lysate)

BCAS2 monoclonal antibody (M01), clone 1D10 Western Blot analysis of BCAS2 expression in K-562 (Cat # L009V1).

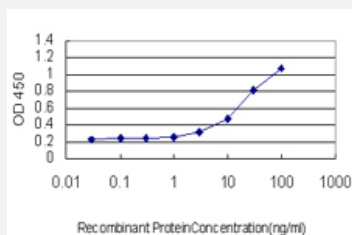


Western Blot (Transfected lysate)

Western Blot analysis of BCAS2 expression in transfected 293T cell line by BCAS2 monoclonal antibody (M01), clone 1D10.

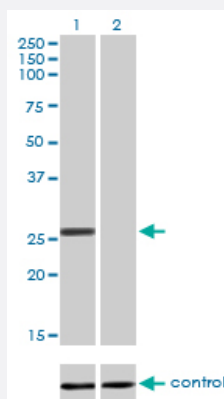
Lane 1: BCAS2 transfected lysate(26.1 KDa).

Lane 2: Non-transfected lysate.



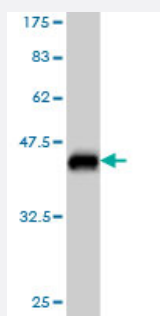
Sandwich ELISA (Recombinant protein)

Detection limit for recombinant GST tagged BCAS2 is approximately 1ng/ml as a capture antibody.



RNAi Knockdown (Antibody validated)

Western blot analysis of BCAS2 over-expressed 293 cell line, cotransfected with BCAS2 Validated Chimera RNAi (Cat # H00010286-R01V) (Lane 2) or non-transfected control (Lane 1). Blot probed with BCAS2 monoclonal antibody (M01), clone 1D10 (Cat # H00010286-M01). GAPDH (36.1 kDa) used as specificity and loading control.



Western Blot detection against Immunogen (37.84 KDa) .

Specification

Product Description	Mouse monoclonal antibody raised against a partial recombinant BCAS2.
Immunogen	BCAS2 (NP_005863, 116 a.a. ~ 225 a.a) partial recombinant protein with GST tag. MW of the GST tag alone is 26 KDa.
Sequence	HQAVRIENLELMSQHGCAWVKVYNENLVHMIHAQKELQKLRLKHIQDLNWQRKNMQLTAGSKLR EMESNWVSLVSKNYEIERIVQLENEYQIKQQHGEANKENIRQDF
Host	Mouse
Reactivity	Human
Interspecies Antigen Sequence	Rat (99)
Isotype	IgG2a Kappa
Quality Control Testing	Antibody Reactive Against Recombinant Protein. Western Blot detection against Immunogen (37.84 KDa) .
Storage Buffer	In 1x PBS, pH 7.4
Storage Instruction	Store at -20°C or lower. Aliquot to avoid repeated freezing and thawing.

Applications

- Western Blot (Cell lysate)

BCAS2 monoclonal antibody (M01), clone 1D10 Western Blot analysis of BCAS2 expression in K-562 (Cat # L009V1).

[Protocol Download](#)

- Western Blot (Transfected lysate)

Western Blot analysis of BCAS2 expression in transfected 293T cell line by BCAS2 monoclonal antibody (M01), clone 1D10.

Lane 1: BCAS2 transfected lysate(26.1 KDa).

Lane 2: Non-transfected lysate.

[Protocol Download](#)

- Western Blot (Recombinant protein)

[Protocol Download](#)

- Sandwich ELISA (Recombinant protein)

Detection limit for recombinant GST tagged BCAS2 is approximately 1ng/ml as a capture antibody.

[Protocol Download](#)

- ELISA

- RNAi Knockdown (Antibody validated)

Western blot analysis of BCAS2 over-expressed 293 cell line, cotransfected with BCAS2 Validated Chimera RNAi (Cat # H00010286-R01V) (Lane 2) or non-transfected control (Lane 1). Blot probed with BCAS2 monoclonal antibody (M01), clone 1D10 (Cat # H00010286-M01). GAPDH (36.1 kDa) used as specificity and loading control.

[Protocol Download](#)

Gene Info — BCAS2

Entrez GeneID	10286
---------------	-----------------------

GeneBank Accession#	NM_005872
---------------------	---------------------------

Protein Accession#	NP_005863
--------------------	---------------------------

Gene Name	BCAS2
-----------	-------

Gene Alias	DAM1
------------	------

Gene Description	breast carcinoma amplified sequence 2
Omim ID	605783
Gene Ontology	Hyperlink
Gene Summary	amplified in breast cancer
Other Designations	OTTHUMP00000013668 spliceosome associated protein, amplified in breast cancer

Publication Reference

- [A Quantitative Proteomic Analysis Uncovers the Relevance of CUL3 in Bladder Cancer Aggressiveness.](#)

Grau L, Luque-Garcia JL, Gonzalez-Peramato P, Theodorescu D, Palou J, Fernandez-Gomez JM, Sanchez-Carbayo M.
PLoS One 2013 Jan; 8(1):e53328.

Application: WB, Human, Bladder cancer cells T24, T24T