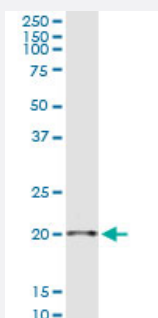


SAP18 (Human) IP-WB Antibody Pair

Catalog # H00010284-PW1

Size 1 Set

Applications



Immunoprecipitation of SAP18 transfected lysate using rabbit polyclonal anti-SAP18 and Protein A Magnetic Bead ([U0007](#)), and immunoblotted with mouse purified polyclonal anti-SAP18.

Specification

Product Description	This IP-WB antibody pair set comes with one antibody for immunoprecipitation and another to detect the precipitated protein in western blot.
Reactivity	Human
Interspecies Antigen Sequence	Mouse (98); Rat (98)
Quality Control Testing	Immunoprecipitation-Western Blot (IP-WB) Immunoprecipitation of SAP18 transfected lysate using rabbit polyclonal anti-SAP18 and Protein A Magnetic Bead (U0007), and immunoblotted with mouse purified polyclonal anti-SAP18.
Supplied Product	Antibody pair set content: 1. Antibody pair for IP: rabbit polyclonal anti-SAP18 (300 ul) 2. Antibody pair for WB: mouse purified polyclonal anti-SAP18 (50 ug)
Storage Instruction	Store reagents of the antibody pair set at -20°C or lower. Please aliquot to avoid repeated freeze thaw cycle. Reagents should be returned to -20°C storage immediately after use.

Applications

- Immunoprecipitation-Western Blot

[Protocol Download](#)

Gene Info — SAP18

Entrez GeneID [10284](#)

Gene Name SAP18

Gene Alias 2HOR0202, MGC27131, SAP18P

Gene Description Sin3A-associated protein, 18kDa

Omim ID [602949](#)

Gene Ontology [Hyperlink](#)

Gene Summary Histone acetylation plays a key role in the regulation of eukaryotic gene expression. Histone acetylation and deacetylation are catalyzed by multisubunit complexes. The protein encoded by this gene is a component of the histone deacetylase complex, which includes SIN3, SAP30, HDAC1, HDAC2, RbAp46, RbAp48, and other polypeptides. This protein directly interacts with SIN3 and enhances SIN3-mediated transcriptional repression when tethered to the promoter. A pseudogene has been identified on chromosome 2. [provided by RefSeq]

Other Designations OTTHUMP00000018107|cell growth inhibiting protein 38|histone deacetylase complex subunit SAP18|sin3-associated polypeptide, p18