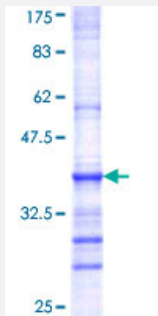


# BET1 (Human) Recombinant Protein (Q01)

Catalog # H00010282-Q01

Size 25 ug, 10 ug

## Applications



## Specification

Product Description	Human BET1 partial ORF ( NP_005859, 1 a.a. - 95 a.a.) recombinant protein with GST-tag at N-terminal.
Sequence	MRRAGLGEGVPPGNYGNYGYANSYGYSACEEENERLTESLRSKVTAIKSLSIEIGHEVKQTQNKLLAE MDSQFDSTTGFLGKTMGKLKILSRGSQTK
Host	Wheat Germ (in vitro)
Theoretical MW (kDa)	36.19
Interspecies Antigen Sequence	Mouse (92); Rat (93)
Preparation Method	<a href="#">in vitro wheat germ expression system</a>
Purification	Glutathione Sepharose 4 Fast Flow
Quality Control Testing	12.5% SDS-PAGE Stained with Coomassie Blue.
Storage Buffer	50 mM Tris-HCl, 10 mM reduced Glutathione, pH=8.0 in the elution buffer.
Storage Instruction	Store at -80°C. Aliquot to avoid repeated freezing and thawing.
Note	Best use within three months from the date of receipt of this protein.

## Applications

- Enzyme-linked Immunoabsorbent Assay
- Western Blot (Recombinant protein)
- Antibody Production
- Protein Array

## Gene Info — BET1

Entrez GeneID [10282](#)

GeneBank Accession# [NM\\_005868](#)

Protein Accession# [NP\\_005859](#)

Gene Name BET1

Gene Alias DKFZp781C0425, HBET1

Gene Description blocked early in transport 1 homolog (S. cerevisiae)

Omim ID [605456](#)

Gene Ontology [Hyperlink](#)

**Gene Summary** This gene encodes a golgi-associated membrane protein that participates in vesicular transport from the endoplasmic reticulum (ER) to the Golgi complex. The encoded protein functions as a soluble N-ethylmaleimide-sensitive factor attachment protein receptor and may be involved in the docking of ER-derived vesicles with the cis-Golgi membrane. Alternatively spliced transcript variants encoding different isoforms have been described but their full-length nature has not been determined. [provided by RefSeq]

**Other Designations** BET1 homolog|Bet1p homolog|Golgi vesicular membrane trafficking protein p18|blocked early in transport 1

## Pathway

- [SNARE interactions in vesicular transport](#)