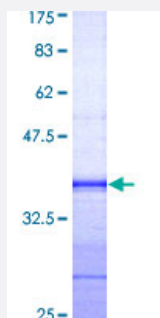


EFS (Human) Recombinant Protein (Q01)

Catalog # H00010278-Q01

Size 25 ug, 10 ug

Applications



Specification

Product Description	Human EFS partial ORF (AAH34246, 369 a.a. - 468 a.a.) recombinant protein with GST-tag at N-terminal.
Sequence	QANQPPRLFVPHSKRVVVAHRLVFVGDTLGRLAASAPLRAQVRAAGTALGQALRATVLAVKGA ALGYPSSPAIQEMVQCVTELAGQALQFTLLTSLAP
Host	Wheat Germ (in vitro)
Theoretical MW (kDa)	36.63
Interspecies Antigen Sequence	Mouse (79); Rat (80)
Preparation Method	in vitro wheat germ expression system
Purification	Glutathione Sepharose 4 Fast Flow
Quality Control Testing	12.5% SDS-PAGE Stained with Coomassie Blue.
Storage Buffer	50 mM Tris-HCl, 10 mM reduced Glutathione, pH=8.0 in the elution buffer.
Storage Instruction	Store at -80°C. Aliquot to avoid repeated freezing and thawing.
Note	Best use within three months from the date of receipt of this protein.

Applications

- Enzyme-linked Immunoabsorbent Assay
- Western Blot (Recombinant protein)
- Antibody Production
- Protein Array

Gene Info — EFS

Entrez GeneID [10278](#)

GeneBank Accession# [BC034246](#)

Protein Accession# [AAH34246](#)

Gene Name EFS

Gene Alias CAS3, CASS3, EFS1, EFS2, HEFS, SIN

Gene Description embryonal Fyn-associated substrate

Omim ID [609906](#)

Gene Ontology [Hyperlink](#)

Gene Summary The protein encoded by this gene contains a SH3 domain, which is known to be important in intra cellular signal transduction. The protein encoded by a similiar gene in mice was shown to be able to bind to SH3 domain of protein-tyrosine kinases. The function of this gene is unknown. Two alter natively spliced variants have been described. [provided by RefSeq

Other Designations Cas scaffolding protein family member 3|signal transduction protein (SH3 containing)