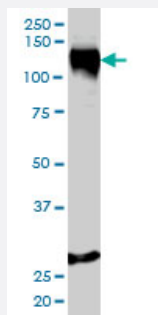


STAG1 monoclonal antibody (M01), clone 2E9

Catalog # H00010274-M01

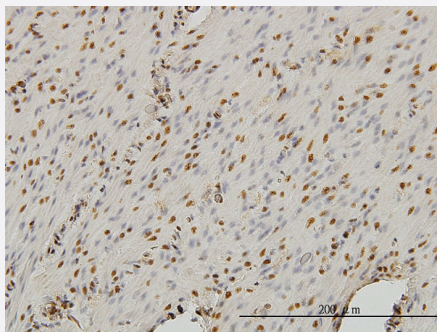
Size 100 ug

Applications



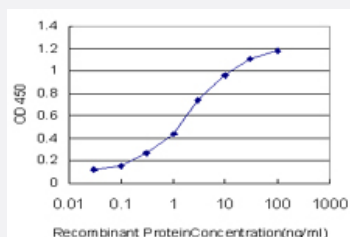
Western Blot (Cell lysate)

STAG1 monoclonal antibody (M01), clone 2E9 Western Blot analysis of STAG1 expression in HeLa (Cat # L013V1).



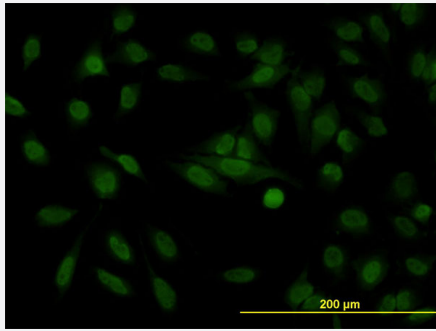
Immunohistochemistry (Formalin/PFA-fixed paraffin-embedded sections)

Immunoperoxidase of monoclonal antibody to STAG1 on formalin-fixed paraffin-embedded human smooth muscle. [antibody concentration 3 ug/ml]



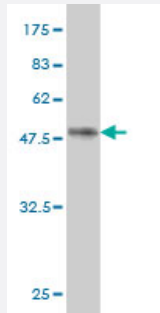
Sandwich ELISA (Recombinant protein)

Detection limit for recombinant GST tagged STAG1 is approximately 0.03ng/ml as a capture antibody.



Immunofluorescence

Immunofluorescence of monoclonal antibody to STAG1 on HeLa cell. [antibody concentration 10 ug/ml]



Western Blot detection against Immunogen (37.73 KDa) .

Specification

Product Description	Mouse monoclonal antibody raised against a partial recombinant STAG1.
Immunogen	STAG1 (AAH64699, 1112 a.a. ~ 1221 a.a) partial recombinant protein with GST tag. MW of the GST tag alone is 26 KDa.
Sequence	LPAPQLTSTVLRENSRPMGDQIQEPESEHGSEPDFLHNRGLMEEDAEPFEDVMMSSRSQLEDM NEEFEDTMVIDLPPSRNRRERAELRPDFFDSAAIIEDDSGFGMPMF
Host	Mouse
Reactivity	Human
Interspecies Antigen Sequence	Mouse (73); Rat (73)
Isotype	IgG2b Kappa
Quality Control Testing	Antibody Reactive Against Recombinant Protein. Western Blot detection against Immunogen (37.73 KDa) .
Storage Buffer	In 1x PBS, pH 7.4
Storage Instruction	Store at -20°C or lower. Aliquot to avoid repeated freezing and thawing.

Applications

- Western Blot (Cell lysate)

STAG1 monoclonal antibody (M01), clone 2E9 Western Blot analysis of STAG1 expression in HeLa (Cat # L013V1).

[Protocol Download](#)

- Western Blot (Recombinant protein)

[Protocol Download](#)

- Immunohistochemistry (Formalin/PFA-fixed paraffin-embedded sections)

Immunoperoxidase of monoclonal antibody to STAG1 on formalin-fixed paraffin-embedded human smooth muscle. [antibody concentration 3 ug/ml]

[Protocol Download](#)

- Sandwich ELISA (Recombinant protein)

Detection limit for recombinant GST tagged STAG1 is approximately 0.03ng/ml as a capture antibody.

[Protocol Download](#)

- ELISA

- Immunofluorescence

Immunofluorescence of monoclonal antibody to STAG1 on HeLa cell. [antibody concentration 10 ug/ml]

Gene Info — STAG1

Entrez GeneID	10274
---------------	-----------------------

GeneBank Accession#	BC064699
---------------------	--------------------------

Protein Accession#	AAH64699
--------------------	--------------------------

Gene Name	STAG1
-----------	-------

Gene Alias	DKFZp781D1416, SA1
------------	--------------------

Gene Description	stromal antigen 1
------------------	-------------------

Omim ID	604358
---------	------------------------

Gene Ontology[Hyperlink](#)**Gene Summary**

This gene is a member of the SCC3 family and is expressed in the nucleus. It encodes a component of cohesin, a multisubunit protein complex that provides sister chromatid cohesion along the length of a chromosome from DNA replication through prophase and prometaphase, after which it is dissociated in preparation for segregation during anaphase. [provided by RefSeq]

Other Designations

SCC3 homolog 1|nuclear protein stromal antigen 1

Pathway

- [Cell cycle](#)