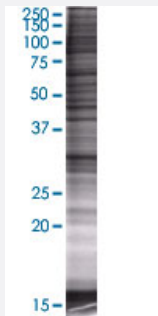


# STUB1 293T Cell Transient Overexpression Lysate(Denatured)

Catalog # H00010273-T01

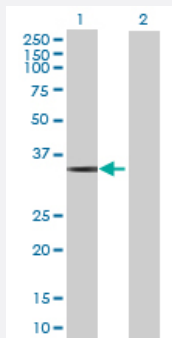
Size 100 uL

## Applications



### SDS-PAGE Gel

STUB1 transfected lysate.



### Western Blot

Lane 1: STUB1 transfected lysate ( 33.44 KDa)

Lane 2: Non-transfected lysate.

## Specification

Transfected Cell Line	293T
Plasmid	pCMV-STUB1 full-length
Host	Human
Theoretical MW (kDa)	33.44
Interspecies Antigen Sequence	Mouse (97); Rat (97)

#### Quality Control Testing

Transient overexpression cell lysate was tested with Anti-STUB1 antibody ([H00010273-B01](#)) by Western Blots.  
 SDS-PAGE Gel  
 STUB1 transfected lysate.  
 Western Blot  
 Lane 1: STUB1 transfected lysate ( 33.44 KDa)  
 Lane 2: Non-transfected lysate.

#### Storage Buffer

1X Sample Buffer (50 mM Tris-HCl, 2% SDS, 10% glycerol, 300 mM 2-mercaptoethanol, 0.01% Bromophenol blue)

#### Storage Instruction

Store at -80°C. Aliquot to avoid repeated freezing and thawing.

## Applications

- Western Blot

## Gene Info — STUB1

#### Entrez GeneID

[10273](#)

#### GeneBank Accession#

[NM\\_005861.2](#)

#### Protein Accession#

[NP\\_005852.2](#)

#### Gene Name

STUB1

#### Gene Alias

CHIP, HSPABP2, NY-CO-7, SDCCAG7, UBOX1

#### Gene Description

STIP1 homology and U-box containing protein 1

#### Omim ID

[607207](#)

#### Gene Ontology

[Hyperlink](#)

#### Gene Summary

STUB1, or CHIP, is a ubiquitin ligase/cochaperone that participates in protein quality control by targeting a broad range of chaperone protein substrates for degradation (Min et al., 2008 [PubMed 18411298]).[supplied by OMIM]

#### Other Designations

heat shock protein A binding protein 2 (c-terminal)|serologically defined colon cancer antigen 7

## Pathway

- [Ubiquitin mediated proteolysis](#)