

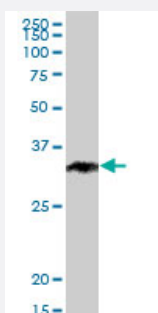
MaxPab®

STUB1 purified MaxPab mouse polyclonal antibody (B01P)

Catalog # H00010273-B01P

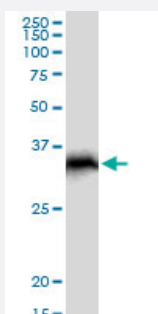
Size 50 ug

Applications



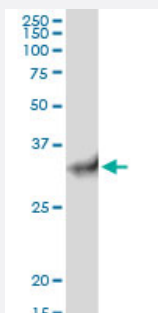
Western Blot (Cell lysate)

STUB1 MaxPab polyclonal antibody. Western Blot analysis of STUB1 expression in HepG2.



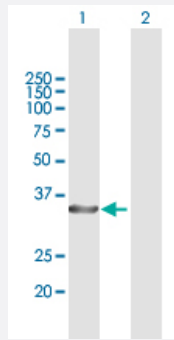
Western Blot (Cell lysate)

STUB1 MaxPab polyclonal antibody. Western Blot analysis of STUB1 expression in NIH/3T3.



Western Blot (Cell lysate)

STUB1 MaxPab polyclonal antibody. Western Blot analysis of STUB1 expression in PC-12.



Western Blot (Transfected lysate)

Western Blot analysis of STUB1 expression in transfected 293T cell line ([H00010273-T01](#)) by STUB1 MaxPab polyclonal antibody.

Lane 1: STUB1 transfected lysate(33.33 KDa).

Lane 2: Non-transfected lysate.

Specification

Product Description	Mouse polyclonal antibody raised against a full-length human STUB1 protein.
Immunogen	STUB1 (NP_005852.2, 1 a.a. ~ 303 a.a) full-length human protein.
Sequence	MKGKEEKEGGARLGAGGGSPEKSPSAQELKEQGNRLFVGRKYPEAAACYGRAITRNPLVAVYYT NRALCYLKMQQHEQALADCRRALELDGQSVKAHFFLGQCQLEMESYDEAIANLQRAYSLAKEQR LNFGDDIPSALRIAKKKRWNSIEERRIHQESLHLSRLIAAERERELEECQRNHEGDEDDSHVR AQQACIEAKHDKYMADMDELFSQVDEKRKKRDIPDYLCGKISFELMREPCITPSGITYDRKDIEEHL QRVGHFDPVTRSPLTQEQLIPNLAMKEVIDAFISENGWVEDY
Host	Mouse
Reactivity	Human, Mouse, Rat
Interspecies Antigen Sequence	Mouse (97); Rat (97)
Quality Control Testing	Antibody reactive against mammalian transfected lysate.
Storage Buffer	In 1x PBS, pH 7.4
Storage Instruction	Store at -20°C or lower. Aliquot to avoid repeated freezing and thawing.

Applications

- Western Blot (Cell lysate)

STUB1 MaxPab polyclonal antibody. Western Blot analysis of STUB1 expression in HepG2.

[Protocol Download](#)

- Western Blot (Cell lysate)

STUB1 MaxPab polyclonal antibody. Western Blot analysis of STUB1 expression in NIH/3T3.

[Protocol Download](#)

- Western Blot (Cell lysate)

STUB1 MaxPab polyclonal antibody. Western Blot analysis of STUB1 expression in PC-12.

[Protocol Download](#)

- Western Blot (Transfected lysate)

Western Blot analysis of STUB1 expression in transfected 293T cell line ([H00010273-T01](#)) by STUB1 MaxPab polyclonal antibody.

Lane 1: STUB1 transfected lysate(33.33 KDa).

Lane 2: Non-transfected lysate.

[Protocol Download](#)

Gene Info — STUB1

Entrez GeneID [10273](#)

GeneBank Accession# [NM_005861.2](#)

Protein Accession# [NP_005852.2](#)

Gene Name STUB1

Gene Alias CHIP, HSPABP2, NY-CO-7, SDCCAG7, UBOX1

Gene Description STIP1 homology and U-box containing protein 1

Omim ID [607207](#)

Gene Ontology [Hyperlink](#)

Gene Summary STUB1, or CHIP, is a ubiquitin ligase/cochaperone that participates in protein quality control by targeting a broad range of chaperone protein substrates for degradation (Min et al., 2008 [PubMed 18411298]).[supplied by OMIM]

Other Designations heat shock protein A binding protein 2 (c-terminal)|serologically defined colon cancer antigen 7

Pathway

- [Ubiquitin mediated proteolysis](#)