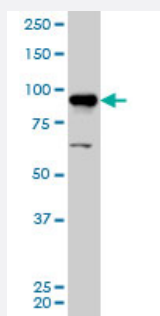


AKAP8 monoclonal antibody (M01), clone 3D4

Catalog # H00010270-M01

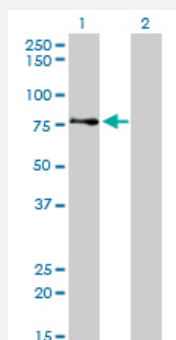
Size 100 ug

Applications



Western Blot (Cell lysate)

AKAP8 monoclonal antibody (M01), clone 3D4 Western Blot analysis of AKAP8 expression in HeLa S3 NE (Cat # L013V3).

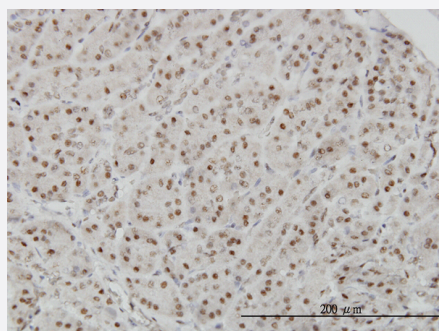


Western Blot (Transfected lysate)

Western Blot analysis of AKAP8 expression in transfected 293T cell line by AKAP8 monoclonal antibody (M01), clone 3D4.

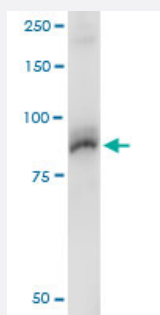
Lane 1: AKAP8 transfected lysate(76.2 KDa).

Lane 2: Non-transfected lysate.



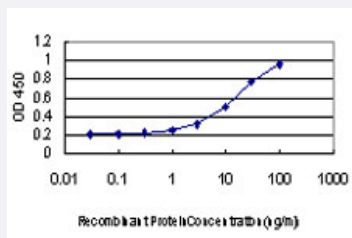
Immunohistochemistry (Formalin/PFA-fixed paraffin-embedded sections)

Immunoperoxidase of monoclonal antibody to AKAP8 on formalin-fixed paraffin-embedded human pancreas. [antibody concentration 3 ug/ml]



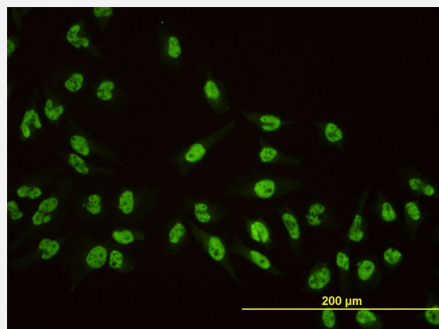
Immunoprecipitation

Immunoprecipitation of AKAP8 transfected lysate using anti-AKAP8 monoclonal antibody and Protein A Magnetic Bead, and immunoblotted with AKAP8 monoclonal antibody.



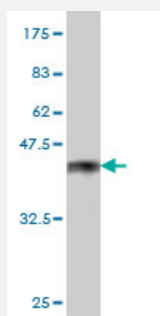
Sandwich ELISA (Recombinant protein)

Detection limit for recombinant GST tagged AKAP8 is approximately 0.3ng/ml as a capture antibody.



Immunofluorescence

Immunofluorescence of monoclonal antibody to AKAP8 on HeLa cell. [antibody concentration 10 ug/ml]



Western Blot detection against Immunogen (38.06 KDa) .

Specification

Product Description	Mouse monoclonal antibody raised against a partial recombinant AKAP8.
Immunogen	AKAP8 (NP_005849, 551 a.a. ~ 662 a.a) partial recombinant protein with GST tag. MW of the GST tag alone is 26 KDa.
Sequence	VDPEMEGDDNLGGEDKKETPEEVAADVLAEVITAAVRAVDGEGAPAPESSGEPAEDEGPTDTAEAGSDPQAEQLLEEQVPCGTAHEKGVPKARSEAAEAGNGAETMAAEAES
Host	Mouse
Reactivity	Human
Isotype	IgG2a Kappa
Quality Control Testing	Antibody Reactive Against Recombinant Protein. Western Blot detection against Immunogen (38.06 KDa) .

Storage Buffer

In 1x PBS, pH 7.4

Storage Instruction

Store at -20°C or lower. Aliquot to avoid repeated freezing and thawing.

Applications

- Western Blot (Cell lysate)

AKAP8 monoclonal antibody (M01), clone 3D4 Western Blot analysis of AKAP8 expression in Hela S3 NE (Cat # L013V3).

[Protocol Download](#)

- Western Blot (Transfected lysate)

Western Blot analysis of AKAP8 expression in transfected 293T cell line by AKAP8 monoclonal antibody (M01), clone 3D4.

Lane 1: AKAP8 transfected lysate(76.2 KDa).

Lane 2: Non-transfected lysate.

[Protocol Download](#)

- Western Blot (Recombinant protein)

[Protocol Download](#)

- Immunohistochemistry (Formalin/PFA-fixed paraffin-embedded sections)

Immunoperoxidase of monoclonal antibody to AKAP8 on formalin-fixed paraffin-embedded human pancreas. [antibody concentration 3 ug/ml]

[Protocol Download](#)

- Immunoprecipitation

Immunoprecipitation of AKAP8 transfected lysate using anti-AKAP8 monoclonal antibody and Protein A Magnetic Bead, and immunoblotted with AKAP8 monoclonal antibody.

[Protocol Download](#)

- Sandwich ELISA (Recombinant protein)

Detection limit for recombinant GST tagged AKAP8 is approximately 0.3ng/ml as a capture antibody.

[Protocol Download](#)

- ELISA

- Immunofluorescence

Immunofluorescence of monoclonal antibody to AKAP8 on HeLa cell. [antibody concentration 10 ug/ml]

Gene Info — AKAP8

Entrez GeneID [10270](#)

GeneBank Accession# [NM_005858](#)

Protein Accession# [NP_005849](#)

Gene Name AKAP8

Gene Alias AKAP95, DKFZp586B1222

Gene Description A kinase (PRKA) anchor protein 8

Omim ID [604692](#)

Gene Ontology [Hyperlink](#)

Gene Summary The A-kinase anchor proteins (AKAPs) are a group of structurally diverse proteins, which have the common function of binding to the regulatory subunit of protein kinase A (PKA) and confining the holoenzyme to discrete locations within the cell. This gene encodes a member of the AKAP family. The encoded protein is located in the nucleus during interphase and is distinctly redistributed during mitosis. This protein has a cell cycle-dependent interaction with the RII subunit of PKA. [provided by RefSeq]

Other Designations A-kinase anchor protein 8|A-kinase anchor protein, 95kDa