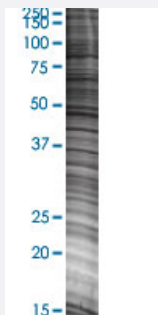


# RAMP3 293T Cell Transient Overexpression Lysate(Denatured)

Catalog # H00010268-T01

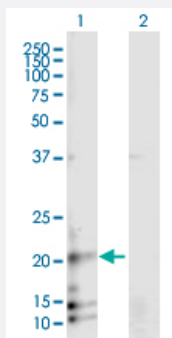
Size 100 uL

## Applications



### SDS-PAGE Gel

RAMP3 transfected lysate.



### Western Blot

Lane 1: RAMP3 transfected lysate ( 16.5 KDa)

Lane 2: Non-transfected lysate.

## Specification

**Transfected Cell Line** 293T

**Plasmid** pCMV-RAMP3 full-length

**Host** Human

**Theoretical MW (kDa)** 16.5

**Quality Control Testing** Transient overexpression cell lysate was tested with Anti-RAMP3 antibody ([H00010268-B01P](#)) by Western Blots.  
SDS-PAGE Gel  
RAMP3 transfected lysate.  
Western Blot  
Lane 1: RAMP3 transfected lysate ( 16.5 KDa)  
Lane 2: Non-transfected lysate.

Storage Buffer	1X Sample Buffer (50 mM Tris-HCl, 2% SDS, 10% glycerol, 300 mM 2-mercaptoethanol, 0.01% Bromophenol blue)
Storage Instruction	Store at -80°C. Aliquot to avoid repeated freezing and thawing.

## Applications

- Western Blot

## Gene Info — RAMP3

Entrez GeneID [10268](#)

GeneBank Accession# [NM\\_005856](#)

Protein Accession# [NP\\_005847.1](#)

Gene Name RAMP3

Gene Alias -

Gene Description receptor (G protein-coupled) activity modifying protein 3

Omim ID [605155](#)

Gene Ontology [Hyperlink](#)

**Gene Summary**

The protein encoded by this gene is a member of the RAMP family of single-transmembrane-domain proteins, called receptor (calcitonin) activity modifying proteins (RAMPs). RAMPs are type I transmembrane proteins with an extracellular N terminus and a cytoplasmic C terminus. RAMPs are required to transport calcitonin-receptor-like receptor (CRLR) to the plasma membrane. CRLR, a receptor with seven transmembrane domains, can function as either a calcitonin-gene-related peptide (CGRP) receptor or an adrenomedullin receptor, depending on which members of the RAMP family are expressed. In the presence of this (RAMP3) protein, CRLR functions as an adrenomedullin receptor. [provided by RefSeq]

**Other Designations**

calcitonin receptor-like receptor activity modifying protein 3|receptor (calcitonin) activity modifying protein 3|receptor activity modifying protein 3|receptor-activity-modifying protein 3

## Pathway

- [Vascular smooth muscle contraction](#)

## Disease

- [Cardiovascular Diseases](#)
- [Diabetes Mellitus](#)
- [Edema](#)