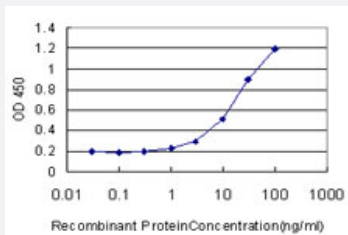


# RAMP1 monoclonal antibody (M01), clone 1F1

Catalog # H00010267-M01

Size 100 ug

## Applications



### Sandwich ELISA (Recombinant protein)

Detection limit for recombinant GST tagged RAMP1 is approximately 1ng/ml as a capture antibody.

## Specification

<b>Product Description</b>	Mouse monoclonal antibody raised against a partial recombinant RAMP1.
<b>Immunogen</b>	RAMP1 (NP_005846, 27 a.a. ~ 117 a.a) partial recombinant protein with GST tag. MW of the GST tag alone is 26 KDa.
<b>Sequence</b>	CQEANYGALLRELCLTQFQVDMEAVGETLWCDWGRTIRSYRELADCTWHMAEKLGCFWPNAEV DRFFLAVHGRYFRSCPISGRAVRDPPGS
<b>Host</b>	Mouse
<b>Reactivity</b>	Human
<b>Isotype</b>	IgG2b Kappa
<b>Quality Control Testing</b>	Antibody Reactive Against Recombinant Protein.
<b>Storage Buffer</b>	In 1x PBS, pH 7.4
<b>Storage Instruction</b>	Store at -20°C or lower. Aliquot to avoid repeated freezing and thawing.

## Applications

- Sandwich ELISA (Recombinant protein)

Detection limit for recombinant GST tagged RAMP1 is approximately 1ng/ml as a capture antibody.

[Protocol Download](#)

- ELISA

## Gene Info — RAMP1

Entrez GeneID [10267](#)

GeneBank Accession# [NM\\_005855](#)

Protein Accession# [NP\\_005846](#)

Gene Name RAMP1

Gene Alias -

Gene Description receptor (G protein-coupled) activity modifying protein 1

Omim ID [605153](#)

Gene Ontology [Hyperlink](#)

**Gene Summary** The protein encoded by this gene is a member of the RAMP family of single-transmembrane-domain proteins, called receptor (calcitonin) activity modifying proteins (RAMPs). RAMPs are type I transmembrane proteins with an extracellular N terminus and a cytoplasmic C terminus. RAMPs are required to transport calcitonin-receptor-like receptor (CRLR) to the plasma membrane. CRLR, a receptor with seven transmembrane domains, can function as either a calcitonin-gene-related peptide (CGRP) receptor or an adrenomedullin receptor, depending on which members of the RAMP family are expressed. In the presence of this (RAMP1) protein, CRLR functions as a CGRP receptor. The RAMP1 protein is involved in the terminal glycosylation, maturation, and presentation of the CGRP receptor to the cell surface. [provided by RefSeq]

**Other Designations** calcitonin receptor-like receptor activity modifying protein 1|receptor (calcitonin) activity modifying protein 1|receptor activity modifying protein 1|receptor activity-modifying protein 1

## Pathway

- [Vascular smooth muscle contraction](#)

## Disease

- [Cerebral Infarction](#)
- [Genetic Predisposition to Disease](#)