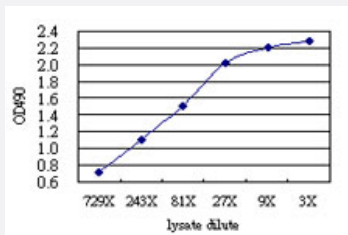


IGSF6 (Human) Matched Antibody Pair

Catalog # H00010261-AP61 Size 1 Set

Applications



Sandwich ELISA detection sensitivity ranging from approximately 729x to 3x dilution of the IGSF6 293T overexpression lysate (non-denatured).

Specification

Product Description	This antibody pair set comes with a matched antibody pair to detect and quantify the protein level of human IGSF6.
Reactivity	Human
Quality Control Testing	Standard curve using IGSF6 293T overexpression lysate (non-denatured) as an analyte. Sandwich ELISA detection sensitivity ranging from approximately 729x to 3x dilution of the IGSF6 293T overexpression lysate (non-denatured).
Supplied Product	Antibody pair set content: 1. Capture antibody: mouse monoclonal anti-IGSF6 (100 ug) 2. Detection antibody: rabbit MaxPab® affinity purified polyclonal anti-IGSF6 (50 ug) *Reagents are sufficient for at least 3-5 x 96 well plates using recommended protocols.
Storage Instruction	Store reagents of the antibody pair set at -20°C or lower. Please aliquot to avoid repeated freeze thaw cycle. Reagents should be returned to -20°C storage immediately after use.

Applications

- ELISA Pair (Transfected lysate)

[Protocol Download](#)

Gene Info — IGSF6

Entrez GeneID [10261](#)**Gene Name** IGSF6**Gene Alias** DORA**Gene Description** immunoglobulin superfamily, member 6**Omim ID** [606222](#)**Gene Ontology** [Hyperlink](#)**Gene Summary** O**Other Designations** down-regulated by activation (immunoglobulin superfamily)

Disease

- [Colitis](#)
- [Crohn Disease](#)
- [Genetic Predisposition to Disease](#)
- [Inflammatory Bowel Diseases](#)