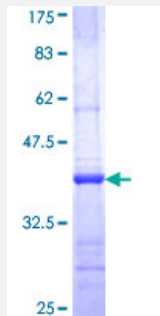


# CNKS1 (Human) Recombinant Protein (Q01)

Catalog # H0010256-Q01

Size 25 ug, 10 ug

## Applications



## Specification

Product Description	Human CNKS1 partial ORF ( NP_006305, 111 a.a. - 210 a.a.) recombinant protein with GST-tag at N-terminal.
Sequence	VLCAAVELLHEADALLFWLSRYLFSHLNDFSACQEIRDLLEELSQVLHEDGPAAEKEGTVLRICSH VAGICHNILVCCPKELLEQKAVLEQVQLDSPLGL
Host	Wheat Germ (in vitro)
Theoretical MW (kDa)	36.74
Interspecies Antigen Sequence	Mouse (74); Rat (74)
Preparation Method	<a href="#">in vitro wheat germ expression system</a>
Purification	Glutathione Sepharose 4 Fast Flow
Quality Control Testing	12.5% SDS-PAGE Stained with Coomassie Blue.
Storage Buffer	50 mM Tris-HCl, 10 mM reduced Glutathione, pH=8.0 in the elution buffer.
Storage Instruction	Store at -80°C. Aliquot to avoid repeated freezing and thawing.
Note	Best use within three months from the date of receipt of this protein.

## Applications

- Enzyme-linked Immunoabsorbent Assay
- Western Blot (Recombinant protein)
- Antibody Production
- Protein Array

## Gene Info — CNKSR1

Entrez GeneID	<a href="#">10256</a>
---------------	-----------------------

GeneBank Accession#	<a href="#">NM_006314</a>
---------------------	---------------------------

Protein Accession#	<a href="#">NP_006305</a>
--------------------	---------------------------

Gene Name	CNKSR1
-----------	--------

Gene Alias	CNK, CNK1, KSR
------------	----------------

Gene Description	connector enhancer of kinase suppressor of Ras 1
------------------	--

Omim ID	<a href="#">603272</a>
---------	------------------------

Gene Ontology	<a href="#">Hyperlink</a>
---------------	---------------------------

Gene Summary	This gene is a necessary element in receptor tyrosine kinase pathways, possibly as a tyrosine phosphorylation target. It is involved in regulation of RAF in the MAPK pathway and may also play a role in a MAPK-independent pathway. [provided by RefSeq]
--------------	--

Other Designations	OTTHUMP00000008767 connector enhancer of KSR-like
--------------------	---